

Resource Guide

*A Guide to Services and Supports
For People with Developmental Disabilities in
Thurston and Mason Counties*



2019-2020

**Thurston/Mason Counties
Developmental Disabilities Program**

Thurston-Mason County Developmental Disabilities Mission Statement

To work with people with developmental disabilities, families and the community to promote everyone's well-being, rights, choices, and opportunities in living as valued, contributing and included members of our community.



THURSTON COUNTY PUBLIC HEALTH AND SOCIAL SERVICES

Developmental Disabilities Program

412 Lilly Road NE, Olympia, WA 98506
(360) 867-2597 TDD (360) 867-2603

*For questions about this resource guide please contact Jennifer Popchokhakim
(360)-867-2597 or to obtain additional copies, please contact (360) 867-2518*

Also available online at:

<https://www.co.thurston.wa.us/health/ssdd/publications.html>

We believe that everyone should lead a full and productive life.

We are committed to creating opportunities for people with disabilities to engage in all types of meaningful activities.

We know this cannot be done alone. Working together, we can develop social, recreational, and job opportunities through collaboration, communication, and creative problem solving.

Join us!

TABLE OF CONTENTS

Introduction to the High School Transition Process	7-14
Referral Agencies	15-20
Vocational Resources	21-26
Community Inclusion	27-28
Post-Secondary Education.....	29-30
In-Home and Residential Services	31-36
Income Support.....	37-42
Transportation	43-46
Recreation.....	47-50
Advocacy/Guardianship	51-56
Medical Services and Resources	57-66
Tribal Resources.....	67-68
Directory of Resources	69-78
Glossary of Terms and Acronyms... ..	79-82



INTRODUCTION TO HIGH SCHOOL TRANSITION

HIGH SCHOOL TRANSITION: PLANNING FOR LIFE AFTER SCHOOL

Transition planning is essential to bridge the gap between school and adult life for young people with disabilities. Students and parents must make important decisions about such things as employment and continuing education options, residential programs, federal and state income support, community safety and mobility, recreation, socialization, and issues of greater independence.

It is important that high school transition planning begin as early as possible. The information in this section is intended to provide guidance to assist families and students in making important decisions for continuing growth as adults after leaving the secondary education system. Please note that services and programs are constantly changing and that there may be many additional options available within your community and surrounding areas.

Most of the resources in this guide are located in Thurston and Mason Counties. For your convenience, we have also listed services outside of the area that could be beneficial.

If you have comments or suggestions about this guide, or would like to provide updated information, please call (360) 867-2519. This Resource Guide is also located online at: www.co.thurston.wa.us/health/ssdd/publications.html

TRANSITION PLANNING CONSIDERATIONS

During your student's high school years, the focus of IEP's and parent/student/teacher meetings will shift toward the transition from school to adult life. The purpose of these transition meetings is to provide an opportunity for each student, along with their planning team, to develop and establish a plan for achieving the student's life goals. Transition planning meetings are typically conducted regularly for students ages 14-21 in preparation for graduation from the public school system. Time will be spent identifying and planning educational, vocational, and meaningful life goals for the student; emphasizing individual preferences, talents, and support needs. The role of each participant will be to contribute ideas and offer resources that create opportunities for the student rather than emphasizing barriers. To assist in preparing for future meetings, a summary of ten critical issues related to the transition from school to adult life is provided below. As you read, begin to identify your ideas and preferences for each issue.



IN-HOME AND COMMUNITY BASED RESIDENTIAL SERVICES

For many young adults, living at home with family members after graduation is a desirable choice. Similarly, many adults are interested in exploring the option of living outside their family home. The Washington State Developmental Disabilities Administration (DDA) offers varying levels of community-based in-home and supported living services.

EMPLOYMENT SERVICES

By law, students up to age 21 are entitled to receive special education services through the public school system. However, once a student graduates or makes the decision to leave school, support services are no longer guaranteed; most adult services require the individual to apply, establish eligibility, and agree to voluntarily participate in chosen programs. For further information regarding employment programs available within your community, contact your local county Developmental Disabilities Program (Thurston/Mason County: (360) 867-2518). One such option that may be available to students in their final high school transition year is **School to Work**, which is a program that is jointly funded by the County and the Division of Vocational Rehabilitation. Another option that may be available is **Individual Supported Employment**, which offers a variety of supports to job seekers with disabilities as they pursue work in the community. Supported Employment Services structure vocational exploration and job placement services to meet each individual's unique skills and needs. Supported Employment Services are tailored to the individual and limited by the availability of public funding. Developing and incorporating an employment plan early in the student's high school years will help facilitate a smooth transition from school to work.

PERSONAL TIME

Coordinating recreational opportunities within your community may require careful planning. Graduating students may be interested in maintaining old friendships, continuing recreation routines they participated in during school or exploring new ways to use their personal time. It is a good idea consult with friends and relatives to assist with discovering new recreational ideas and maintaining healthy relationships. Discussing recreational interests offers a chance to be creative in identifying activities within your community.

TRANSPORTATION

The planning team will identify the range of activities and the transportation needs that support the goals of the graduating student. There is a vast array of transportation options available in our region. Some services will work better for you than others depending on where you live, where you want to go, and the services you need. From bus routes to Dial-A-Lift to walking and bicycling and many other options, most areas in Thurston County are accessible to everyone.

INCOME SUPPORT

As students with disabilities prepare to leave school, financial security becomes a critical issue. Most families immediately look towards employment opportunities for their loved on. However, there are several different income support programs in Washington for individuals with disabilities: SSI, General Assistance and SSDI. The amount of financial support from any of these programs will vary with the student's income, assets, expenses, and debts.

MEDICAL NEEDS

During transition planning meetings, on-going medical concerns will be identified and possible support services discussed. Medicaid and Medicare are two programs which provide for physician visits, hospitalization, and various types of treatments for participants that meet the qualifications. This can be a valuable contribution for families without insurance for their sons/daughters with medical needs.

INSURANCE

Many families have existing insurance policies which may cover young adults for varying lengths of time. Early planning may assist in preparing for insurance coverage cut-offs and the identification of other options. Medicaid may be an option to pursue for individuals determined eligible for SSI.

ADVOCATE/GUARDIAN

Many families are unaware of the fact that they are no longer the legal guardian of their son/daughter after their 18th birthday. Before petitioning the court for guardianship, Washington State requires that less restrictive alternatives be considered first (see page 55). Some adults may need an advocate/guardian due to limited or no access to natural supports. [NOTE: Guardianship is a legal process that may cause the loss of important individual rights.]

LONG-TERM CARE (WILLS/TRUSTS)

Families, in general, are concerned with the welfare of their children after they are no longer around. Wills and trusts are often a complicated matter for families who have offspring with disabilities because they may jeopardize SSI payments and other income support services. Careful planning and information can empower families in this process.

CONTINUING EDUCATION

Students graduating from high school may wish to pursue further education at a community college or take advantage of classes offered by local parks and recreation departments. This may be a valuable use of personal time especially if the student is not going to be employed full-time or are seeking to improve their employability.

HIGH SCHOOL TRANSITION INSTRUCTOR CHECKLIST

Student Name:_____ Phone:_____

Parent/Guardian Name:_____ Phone:_____

DDA Case Manager:_____ Phone:_____

DVR Case Manager:_____ Phone:_____

ACTION	CONTACT AGENCY	DATE(S)
Develop Transition Plan (starting in late elementary/early middle school)	Special Ed Dept., Teachers, Student/Family, Planning Team	
Provide information on how to obtain Social Security Card	Social Security Office	
Provide information on how to obtain Washington Identification Card	Department of Licensing	
Provide information regarding Selective Service Registration	Post Office or online	
Provide information on Voter Registration	School, Library, Online any State Office	
Provide information regarding Supplemental Support and Assistance Programs:	Various agencies	
A. Social/Supplemental Security Income	Social Security Office	
B. Medical Assistance (Medicaid/Medicare)	Health Care Authority, DSHS	
C. Developmental Disabilities Administration (DDA)	State DDA	
D. School to Work Program	County DD Program Manager	
Research and Secure Transportation Options	Intercity Transit Mason Transit Authority Medical Transport, Other	
Vocational Exploration (Job Shadow, Career Exploration, Community Based Internships, etc)	Transition teacher, employment providers, community partners/employers	
Guardianship, Trusts, Supported Decision Making, Wills	NW Justice Project/ ARC/Private Attorney	
In-Home and Residential Options	Various providers	
Final Review & Update of Transition Plan Prior to Graduation	Student, Family, Transition Team, DVR, DDA, County DD	
Professional Resume (including skills/strengths and work experience)	Teacher, Supported Employment Agency, DVR	
Vocational Training and Placement	Student, Family, Transition Team, DVR, DDA, County DD	

STUDENT/PARENT HIGH SCHOOL TRANSITION CHECKLIST

Student Name: _____

Transition Teacher: _____

Phone: _____

DDA Case Manager: _____

Phone: _____

DVR Case Manager: _____

Phone: _____

ACTION

CONTACT AGENCY

DATE(S)

Develop Transition Plan (starting in late elementary/ early middle school)	Special Education Department, Teachers, Student/Family, Planning Team	
Attend all Transition Planning and IEP meetings	Student, Parent, Transition Planning Team	
Obtain Washington Identification Card (needed for employment and financial assistance programs)	Department of Licensing	
Obtain Social Security Card (needed for employment and financial assistance programs)	Social Security Office	
Research and establish transportation options	Intercity Transit, Mason Transit Authority, Medical Transport, Other	
Register for Selective Service (if applicable)	Post Office or online	
Register to Vote	School, library, online	
Application to Financial Assistance Programs	Various Agencies	
A. Supplemental Security Income (SSI)	Social Security Office	
B. Medical Assistance (Medicaid/Medicare)	Health Care Authority, DSHS	
C. Developmental Disabilities Administration (DDA)	DDA Office, County DD	
Apply for School to Work program	County DD Program	
Application to the Division of Vocational Rehabilitation (DVR)	DVR Office	
Legal Decision Making and Financial Planning: Guardianship, Trusts, Supported Decision Making, Wills	NW Justice Project/ ARC/Private Attorney	
Obtain Information and Visit Potential Residential Placements (if interested)	Student, Family, DDA Case Manager	
Vocational and Educational Option Exploration (College/Vocational Program Tours, Job Shadow, Career Exploration, Community Based Internships, etc)	Transition teacher, college counselors, employment providers, community partners/employers	
Final Review and Update of Transition Plan Prior to Graduation	Special Ed Dept, Teachers, Student/Family, Planning Team	
Professional Resume (including skills/strengths and work experience)	Teacher, Supported Employment Agency, DVR	



STATE REFERRAL AGENCIES

DEVELOPMENTAL DISABILITIES ADMINISTRATION (DDA)

DDA/Thurston County Office

Point Plaza East, Building 2, Third Floor
6860 Capitol Blvd SE
Tumwater, WA 98501
(360) 725-4250 or 800-339-8227
No Paid Services Caseload: 888-707-1202
www.dshs.wa.gov/dda

DDA/Mason County Office

2505 Olympic Hwy North, Suite 440
Shelton, WA 98584
(360) 432-2151
www.dshs.wa.gov/dda

DDA offers a list of “factsheets” intended to help explain some of its programs:
<https://fortress.wa.gov/dshs/adsaapps/about/factsheets/DDAFactsheets.aspx>

The Washington state Developmental Disabilities Administration (DDA) is part of the state’s Department of Social and Health Services. DDA assists individuals with developmental disabilities and their families to obtain services and supports based on individual preferences, capabilities and needs, and which promote everyday activities, routines and relationships common to most citizens. DDA partners with county Developmental Disabilities agencies to coordinate services.

DDA uses state and federal funds to provide or purchase supports and services for eligible persons and their families. Resources are limited and needed services may not always be available.

Who does DDA serve? In general, any individual who has a developmental disability which originated before age 18 and is expected to continue indefinitely may be eligible for DDA services. Current eligibility information is available at:
<https://www.dshs.wa.gov/dda/consumers-and-families/eligibility>

Developmental disabilities are:

- Intellectual disability
 - Cerebral Palsy
 - Epilepsy
 - Autism, or
 - Another neurological or other condition closely related to intellectual disability or that requires treatment similar to that required for individuals with intellectual disabilities.
- Which:
- Originated before the individual attained age eighteen;
 - Continued or can be expected to continue indefinitely, and
 - Results in substantial limitations to an individual's intellectual and/or adaptive functioning.

Criteria for DDA eligibility is defined in Washington State Law under **Chapter 388-823 WAC**.

What Services Does DDA Provide?

Case Management – Help eligible persons and their families:

- Identify interests and support needs
- Coordinate planning and development of resources
- Monitor service delivery

Community Inclusion – assists individuals to participate in activities that promote individualized skill development, independent living and community integration. Activities provide individuals with opportunities to develop personal relationships with others in their local communities and to learn, practice, and apply life skills that promote greater independence and community inclusion.

Early Support for Infants and Toddlers (formerly Infant Toddler Early Intervention Program) – Provides early intervention services, including family resources coordination, for eligible children from birth to age 3 and their families. For more information, visit: <https://del.wa.gov/providers-educators/early-support-infants-and-toddlers-esit>.

Employment – Provides ongoing support services and training for eligible persons with paid jobs in a variety of settings and worksites in the community.

Foster Care – Provides voluntary placement in foster care, under certain circumstances, for children under 18.

Individual and Family Services – Provides a variety of individual and community services to assist families in caring for their family member in their home. Includes respite care, behavior support, therapies, etc.

Medicaid Personal Care – MPC services provide individual provider or agency support in order to meet a person's needs for assistance with activities such as bathing, dressing, eating, meal preparation, housework, and travel to medical services. This service is provided in the person's own home or adult family home. Clients must meet financial eligibility for Medicaid and functional eligibility for the MPC program. <https://www.hca.wa.gov/health-care-services-supports/program-administration/medicaid-personal-care>.

Community Supports – Nursing, professional services and therapies, transportation, and medically intensive services not covered by Medicaid.

Residential Services – Services and supports in a variety of settings to assist the person to live independently in the community. These may be offered in the person's home through certified providers or individuals, or in licensed settings. The level of support services is based on individual needs, and varies from a few hours per month up to 24 hours per day.

To get more information about DDA and its services, visit the Web site:
<http://www.dshs.wa.gov/dda>

DIVISION OF VOCATIONAL REHABILITATION-DVR

Thurston County Office

6639 Capitol Boulevard
South Tumwater, WA 98501
Voice/TTY: (360) 664-3060
Toll-free: 1-800-637-5627
Washington Relay: 711
www.dshs.wa.gov/dvr

Mason County Office

2505 Olympic Hwy North, Suite 420
Shelton, WA 98584
Voice/TTY: (360) 432-2110
Toll free: 1-800-830-3243
Washington Relay: 711
www.dshs.wa.gov/dvr

Eligibility for Services:

Applicants need to have a medically verifiable physical or mental disability which is

1. A substantial barrier to employment and
2. Can benefit in terms of an employment outcome from time limited vocational rehabilitation services.

Primary Services

Counseling and Guidance establishes an ongoing relationship between the counselor and client in which DVR can review the evaluation/assessment results, explore job opportunities, and develop a plan to go to work.

Vocational Assessment identifies interests, strengths, vocational limitations and readiness for employment, work skills and job opportunities in the community. These may include an evaluation of social, psychological, medical, economical, educational and vocational information.

Other possible services may include

Medical Restoration covers services which assist with improving or reducing the impact of a medical condition in order to obtain and maintain a job.

Training services may be provided in order for the client to acquire new or additional skills/knowledge for employment. These services may include on-the-job training, vocational and technical training, work skill building and academic training or tutoring.

Rehabilitation Assistive Technology is a process using specialized equipment, design techniques, or innovative approaches to address the client's disability needs and barriers to employment.

Placement services assist in locating, obtaining and maintaining employment consistent with the client's vocational goal mutually agreed upon by the client and the counselor.

Independent Living Services assist with understanding and addressing barriers to participation in family or community activities and/or work. These services include information and referral, advocacy and learning to access community resources. Independent living skills training may include activities of daily living, identifying satisfactory living arrangements, use of transportation systems, etc.

Post-Employment Services assist a rehabilitated individual to maintain or regain employment within the same or closely related occupation.

Telecommunication, Sensory and other Technological Aids and Devices assists in improving your communication capabilities. These services include Telecommunication Devices for the Deaf (TDD), telephone amplifiers, flashing light alarms, etc.

Occupational Licenses, Tools, Equipment, Initial Stock and Supplies may be provided when necessary to obtain employment.

Support Services are provided in conjunction with the primary services listed above in order for the client to complete the rehabilitation plan and become employed. These include transportation, child care, interpreters, and personal assistant services.

Referral Procedure:

1. Call the local DVR office
2. Attend orientation meeting and complete Vocational Information form
3. If eligible, a vocational assessment takes place to address need for services

Applicants need to furnish the following information to receive services:

1. Personal Identification including: Driver's License or picture ID Card and Social Security Card or Birth Certificate
2. Names, addresses, and telephone numbers of the student's current doctor, clinic, hospitals Medical records that indicate diagnoses and/or document disabilities are helpful
3. List of current medications
4. Names, addresses, and telephone numbers of service representatives from other agencies, such as Social Security, employment services, DDA, school-classroom teacher, vocational training, etc.

Some of DVR's services are based on the client's ability to pay. The client will be asked to participate in an assessment of their financial resources and liabilities as part of developing a rehabilitation plan. If it is determined that the client has available resources, they will be expected to participate in funding their rehabilitation plan. Similar benefits will be explored and used when available.

Client Assistance Program, CAP

If the participant disagrees with the DVR counselor's decision, he/she may request a mediator intervene. State number is (800) 544-2121 <http://washingtoncap.org/contact>



VOCATIONAL RESOURCES

VOCATIONAL AGENCIES

Agencies importance when considering the vocational future for a young adult with a disability are:

1. The Developmental Disabilities Administration (DDA) (see page 11)
2. The Division of Vocational Rehabilitation (DVR) (see page 13)
3. Thurston County Developmental Disabilities (School to Work and Individual Supported Employment)

See information in the previous section which explains the specific role of each of these agencies. These two agencies may refer students to vocational services, also known as “Individual Supported Employment.”

Individual Supported Employment

Job development, on-the-job training, and follow-up services help individuals find and keep a job in the community. The exact services depend on the individual's needs but they generally include developing work with an employer, offering training and support to supervisors and co-workers so everything works smoothly, helping the individual learn through on-the-job training, making adjustments to the workplace and job duties, and staying in touch to make sure things work out.

LOCAL VOCATIONAL PROVIDERS

1. **Career Quest** (Serves Thurston and Mason Counties)
www.careerquest.biz
2026 Olympic Hwy N, Ste 201
Shelton, WA 98584
(360) 427-7300
1107 Eastside St SE, #B
Olympia, WA 98405
(360) 427-7300
2. **Exceptional Foresters, Inc. (EFI)** (Serves Thurston and Mason Counties)
www.team-efi.org
2009 W. Railroad Avenue
Shelton, WA 98584
(360) 426-0077
509 Washington St
Olympia, WA 98502
(360) 426-0077
3. **Morningside** (Serves Thurston, Mason, Pierce, Clallam, Grays Harbor, Lewis Counties) www.morningsideservices.com
809 Legion Way
Olympia, WA 98507
(360) 943-0512
4. **Vadis** (Serves Thurston, Mason, Pierce, King, Kitsap Counties)
www.vadis.org
1309 Ruddell Road SE
Lacey, WA 98503
(360) 522-0020
1701 Elm St E
Sumner, WA 98390
(253) 863-5173

SUGGESTED QUESTIONS FOR POTENTIAL SUPPORTED-EMPLOYMENT AGENCIES



The following questions are suggestions for interviewing the agencies involved with individual supported employment. You may think of others that we have not suggested. Meeting the people that will be involved with you after you leave the school system and determining who you feel most comfortable working with is very important.

- 🗨 What kind of jobs do your other participants have?
- 🗨 What kind of help does the agency provide?
- 🗨 How experienced are the people who will be working with me?
- 🗨 How much time is spent getting to know the individual? How is this done?
- 🗨 What will the agency do if I am unhappy with a job?
- 🗨 How big is the company?
- 🗨 How many people do your job coaches actively support?
- 🗨 Does the same person consistently provide support services on the job?
- 🗨 What are your procedures for maintaining communication with all of the people involved, especially interested family members?
- 🗨 Do you accept calls on evenings or weekends?
- 🗨 What is the procedure if someone has a problem at work during the evening or on the weekend?

Thurston-Mason County Public Health & Social Services has developed a booklet called, “It’s Up to You!” to help you with the process of finding a supported employment agency. If you would like a copy of this guide, it is available on line: https://www.co.thurston.wa.us/health/ssdd/pdf/it'suptoyou_2018.pdf
Or you can obtain a copy by e-mailing Anneliese Cole anneliese.cole@co.thurston.wa.us or by calling (360) 867-2518.

ADDITIONAL VOCATIONAL AGENCIES AND OPTIONS

Community Youth Services

711 State Ave NE
Olympia, WA 98506
(360) 943-0780
www.communityyouthservices.org

Job Corps

202 9th Avenue SE
Olympia, WA 98501 (360)754-7404
www.jobcorps.gov

Pacific Mountain Workforce Development

1570 Irving Street SW
Tumwater, WA 98512
(360) 704-3568
www.pacmtn.org

Ecology Youth Corps

Department of Ecology
300 Desmond Dr SE
Lacey, WA 98503
(360) 407-6300
<https://ecology.wa.gov/Waste-Toxics/Solid-waste-litter/Litter/Ecology-Youth-Corps>

Washington Service Corps

A national service AmeriCorps program administered by the Washington State Employment Security Department
P.O. Box 9046
Olympia, WA 98507
(888) 713-6080
<https://washingtonservicecorps.org/>

WorkSource-Mason County

2505 Olympic Hwy N, Suite 420
Shelton, WA 985842174
(360)472-2174_
www.worksourcewa.com

WorkSource-Thurston County

1570 Irving St SW
Tumwater, WA 98512
(360) 704-3600
www.worksourcewa.com

New Market Vocational Skills Ctr

7299 New Market St SW
Tumwater, WA 98501
(360) 570-4500
www.tumwater.k12.wa.us/nmsc

ResCare Youth Workforce Services

4301 South Pine St, Ste 92, 80 &85
Tacoma, WA 98409
Thurston County: (360) 553-0836
Mason County: (360) 227-1010
Pierce County: (253) 219-7466
www.rescare.com/workforceservices/

US Department of Labor

Online resource centers
(877) 348-0502
(877) 348-0501 TTY
www.CareerOneStop.org
www.mySkillsmyFuture.org

Washington Career Bridge

(877) 600-7701_
www.CareerBridge.wa.gov

EMPLOYMENT ELIGIBILITY VERIFICATION

As required by the United States Citizenship and Immigration Services (USCIS), employers are required to verify that all people desiring to be employed in the United States must be in possession of certain unexpired documents verifying their identity and eligibility to work. People with disabilities are NOT excluded from this requirement. Before going to work for pay, people in the United States must have one document from List A below or one document from List B and one from List C Below is a list of a few of the common acceptable documents. (A complete list of acceptable documents is available on the website at: www.uscis.gov/i-9)

LIST A

- United States Passport or US Passport Card
- Permanent Resident Card
- Alien Registration Receipt Card
- Foreign passport that contains a temporary I-551 stamp or temporary I-551 printed notation
- Employment Authorization Document Card that contains a photograph

LIST B

- A state-issued driver's license or I.D. card with photograph
- Military dependent's ID Card
- School ID card with a photograph
- Native American tribal document

LIST C

- U.S. Social Security Card that is unrestricted
- Birth Certificate
- ID card for use of Resident Citizen

WASHINGTON STATE IDENTIFICATION CARD

Note: Individuals who receive public assistance may be eligible for a state ID card at a reduced cost. Ask your DSHS caseworker to complete DSHS form 16-029 ("Request for Identocard") and take it to the Department of Licensing for a reduced cost ID card.

Department of Licensing, Thurston County Branch

645 Woodland Square Loop SE

Lacey, WA 98503

Phone: (360) 459-6754

www.dol.wa.gov/driverslicense/idcards.html

T-W-F: 8:30 a.m. to 5:00 p.m.

Thursday: 9:30 a.m. to 5:00 p.m.

Saturday: 8:30 a.m. to 2:30 p.m.

(closed Mondays and Sundays)

Department of Licensing, Mason County Branch

2511 N Olympic Hwy, Suite 100 Shelton, WA

98584-2944 Phone: (360) 427-2165

www.dol.wa.gov/driverslicense/idcards.html

T-W-F: 8:30 a.m. to 5:00 p.m.

Thursday: 9:30 a.m. to 5:00 p.m.

Saturday: 8:30 a.m. to 2:30 p.m.

(closed Mondays and Sundays)

WASHINGTON STATE BIRTH CERTIFICATE

To obtain a copy of your birth certificate if born in the State of Washington, contact either of the two agencies below. Walk-in, same day service is available, as well as requests by phone. Cost for the birth certificate is \$20. Cash, check, credit card/debit card accepted.

Thurston County Department of Public Health and Social Services

412 Lilly Road NE

Olympia, WA 98506

(360) 867-2618

www.co.thurston.wa.us/health/admin/vitals/index.html

Washington State Department of Health

Center for Health Statistics

101 Israel Road SE Tumwater, WA 98501

(360) 236-4313

[www.doh.wa.gov/LicensesPermitsandCertificates/
BirthDeathMarriageandDivorce/OrderCertificates](http://www.doh.wa.gov/LicensesPermitsandCertificates/BirthDeathMarriageandDivorce/OrderCertificates)

Information needed:

1. Name at Birth
2. Date of Birth
3. City or County of Birth
4. Mother's Full Maiden Name
5. Father's Full Name
6. Current Address
7. Day Time Phone Number with Area Code

REGISTERING FOR SELECTIVE SERVICE

Federal law requires that all young men register with the Selective Service System at age 18. Young women are not required to register. People with a disability are not excluded from this requirement. For federal jobs and other job training programs which rely on federal money, proof of Selective Service registration may be required as part of the application process. Selective. Selective Service registration can be accomplished online or by filling out and mailing a registration card at any Post Office.

See www.sss.gov/Registration-Info/How-to-Register for more information.



COMMUNITY INCLUSION

COMMUNITY INCLUSION

Community is not just where a person lives, works or plays, but is defined by the individual. Each person develops his or her own community by building relationships with people they see on an ongoing basis. A community is where a person can get support, where there is acceptance, and where there is a safe environment.

The Washington state DDA offers Community Inclusion services to help individuals thrive in their community by learning how to actively and independently engage in their local community. This service helps foster natural relationships with other community members that share similar interests.

Community Inclusion services are individualized and provided in typical integrated community settings. Paid supports provide opportunities to learn, practice, and apply skills that promote greater independence and inclusion.

It is the primary goal of these state and county-funded services to provide supports that will promote "The Benefits of Valued Life", namely integration, an increase in competence, status, contribution, power and choice, and health and safety.

"The Benefits of Valued Life"

- ◆ Integration
- ◆ An Increase in Competence
- ◆ Status
- ◆ Contribution
- ◆ Power and Choice
- ◆ Health and Safety

Who is Community Inclusion intended to support?

Washington is a "work first" state, and the assumption is that adults with a developmental disability will be employed. However, for some of these adults, Community Inclusion services are available to assist individuals to participate in activities that promote individualized skill development, independent living and community integration.

DDA clients who are age 62 or have already participated in a DDA employment program for nine consecutive months are eligible for Community Access services.

At this time, a DDA client may have either Community Inclusion or Individual Supported Employment services, but not both.



POST SECONDARY EDUCATION

POST SECONDARY EDUCATION

South Puget Sound Community College (SPSCC)

Disability Support Services
Student Life: Building 22, Suite
260 2011 Mottman Rd., SW
Olympia, WA 98512
(360) 596-5394
Email: dss@spscc.edu
www.spscc.edu

The Evergreen State College

Access Services for Students with Disabilities
LIB 2129
2700 Evergreen Parkway NW
Olympia, WA 98505 (360)
867-6348
www.evergreen.edu/access

St. Martin's University

Office of Disability Support Services O'Grady
Library, Lower Level
5000 Abbey Way SE Lacey, WA 98503-7500
(360) 438-4569
Email: learning.center@stmartin.edu
www.stmartin.edu

Olympic College Extension Access Services

937 W. Alpine Way Shelton, WA 98584
(360) 475-7540
Email: AccessServices@olympic.edu
www.olympic.edu/services/access-services-students-disabilities

Bates Technical College

Disability Support Services
1101 S. Yakima Avenue Tacoma, WA 98405
(253) 680-7013
Email: dss@bates.ctc.edu
https://batestech.edu/student_resources/dss/

Clover Park Technical College

Disabilities Resources for Students
4500 Steilacoom Blvd. SW
Building 17, Room 150
Lakewood, WA 98499
(253) 589-5767
Email: disabilityresources@cptc.edu
<http://www.cptc.edu/disability>

Pierce College

Access and Disability Services
Puyallup Branch
Gaspard Building, A106 1601 – 39th
Avenue SE Puyallup, WA 98374
Fort Steilacoom Branch
9401 Farwest Dr. SW
Lakewood, WA 98498
(253) 964-6468
Email: ADS@pierce.ctc.edu
www.pierce.ctc.edu/ads

University of Washington Do-It Program (Disabilities,

Opportunities, Internetworking,
and Technology) Box 354842
Seattle, WA 98195-4842
(206) 685-3648
www.washington.edu/doit

Centralia College

Disability Services:
Student Center Building 600
Centralia College Blvd Centralia,
WA 98531
(360) 623-8966
www.centralia.edu/students/disabilities

Centralia College

Phoenix Center
600 Centralia College Blvd
Centralia, WA 98531
(360) 623-8610
www.centralia.edu/academics/basic/

Phoenix Center (Transitional
Education Division): GED prep,
adult basic education, English as a
second language, literacy
assistance through Our Literacy
Council. Tuition and fees are
based on income and may be
waived. GED and college
placement (Compass) testing.



IN HOME AND RESIDENTIAL SERVICES

COMMUNITY RESIDENTIAL SERVICES FOR ADULTS

The Washington State Developmental Disabilities Administration (DDA) provides residential supports to adults living in the community in ways that promote individuality, safety and inclusion. The goal of every residential service is to assist people to live as independently as possible to be safe and healthy, treated with respect all while being provided with opportunity for choice. The following information is provided as a brief overview of some options. For more information see <https://www.dshs.wa.gov/dda/community-residential-services-adults>

Adult Family Home (AFH) Services

- AFH services are community-based services delivered in typical family homes that are licensed to support from 2 to 6 residents. AFHs provide a room, meals, laundry, supervision, and varying levels of assistance with support needs.

Adult Residential Care (ARC) Services

- ARC services are provided by licensed Assisted Living Facilities that have a contract with the Aging and Long-Term Support Administration. Services provided include housing, housekeeping services, meals, snacks, laundry, personal care, and activities. Some facilities also have an enhanced Adult Residential Care contract to provide intermittent nursing and medication administration services.

Alternative Living (AL) Services

- AL Services are delivered in the clients own home with the goal of providing individualized teaching and training to assist in gaining the skills necessary to live as independently as possible. Services may be authorized for up to 40 hours per month.

Companion Home (CH) Services

- CH services are offered in a typical family residence for an individual client residing in the contracted provider's home. Supports assist the individual to acquire, retain, and improve upon the skills necessary to live successfully in the community.

Group Training Homes and Group Homes

- Group Homes are community based residential facilities typically serving 5-12 adults. Individuals pay a monthly participation fee based on their income which covers the basic expenses of food and shelter. Group Training homes are certified by DSHS Residential Care Services Division, Group Homes are additionally licensed as an Assisted Living Facility or Adult Family Home. The license identifies the number of people allowed in each home.

State Operated Living Alternatives (SOLA)

- SOLA is a supported living service that is operated by DDA and staffed by state employees. These housing programs offer support to 1-4 individuals who live as roommates and share living expenses and staff support; each individual pays their own bills and receives their own personal care. SOLA is also an option for youth (under age 20) who are approved for Voluntary Placement Services.

Supported Living Services

- **Supported Living Services** support people to live in their own homes with up to three others and receive instruction and support delivered by contracted service providers. Individuals pay their own rent, food, and other personal expenses. This includes one-on-one support and services are based on individual need and the sharing of support within a household.

RESIDENTIAL CARE PROVIDERS

To receive assisted living/residential services an individual must be:

- At least 18 year of age
- Eligible and enrolled in DDA services and Medicaid
- On or approved for the CORE Waiver or the Community Protection Waiver
- Assessed by DDA as needing services in a supported living setting

For specific questions about waiver status or what residential options may be available, contact your DDA case resource manager.

Aacres WA, LLC

2747 Pacific Ave SE, Ste A10
Olympia, WA 98501
(360) 539-7650
www.aacreswashington.com

Citizen Access Residential Resources (CARR)

2415 Harrison Avenue NW Olympia,
WA 98502
(360) 753-6082
www.citizenaccessonline.com

EFI

2009 W. Railroad Avenue
Shelton, WA 98584
(360) 426-0077
www.team-efi.org

Kokua

1226 Carpenter
Rd SE #B-1
Lacey, WA
98503
(360) 705-4665
<http://kokuaservices.org/>

Ambitions

6346 Little Rock Rd SW, Ste 1
Tumwater, WA 98512
(360) 763-5995
www.ambitions.org

Life Force Services, Inc.

Mailing: P.O. Box 8340
Lacey, WA 98509
Walk-In: 7135 Martin Way E
Olympia, WA 98501
(360) 923-0333
www.lifeforceservicesinc.com

Placeone, Inc.

5107 Lacey Blvd SE
Lacey, WA 98503
(360) 491-2396
www.placeoneinc.com

Adult Family Homes (AFH)

AFH Providers online:

<https://fortress.wa.gov/dshs/adsaapps/lookup/AFHPubLookup.aspx>

PERSONAL CARE PROVIDERS

Individual Providers

The Home Care Referral Registry can match Washington State residents who receive publicly funded long term in-home care with pre-qualified, pre-screened individual providers who are ready to work.

www.hcrr.wa.gov

1-800-970-5456

Local: (360) 664-3162 x 143

Agency Providers

In-home personal care can be arranged by private pay or through agencies contracted to provide Medical Personal Care. For a list of in-home care agencies, contact your DDA case manager or call the Area Agency on Aging.

www.agingwashington.org/area-agencies-on-aging

(360) 664-2168 or 1-888-545-0910



SUGGESTED QUESTIONS FOR RESIDENTIAL SERVICE PROVIDERS

What is Important to You?

- Do I have to move to receive services from you?
- Do I have common interests with people who already live in the house?
- Do I get to choose my housemates?
- Who will help the staff get to know me?
- Can I have my friends come to my house?
- Can I go to my family's house to visit or have my family over to visit with me?
- Can my pet move into this home with me? Will my housemates own a pet?
- Does anyone smoke who lives in the house? Can I smoke in the house?
- How many people will I share a house with? Are they quiet, noisy, friendly?
- Will I get help cooking the things I like to eat?
- May I keep my cell phone?
- How do I sign up for cable?

Provider Qualifications

- How does your agency review whether I am getting the supports I need?
- Will my family member or I have input in hiring staff who will be assisting me?
- How are people assigned to work with me? Will they be the same people every day?
- Do the people who assist me work all day with me or will I have multiple people help me throughout the day? How often will my staff change?
- Is there someone you support or a family member that I could ask questions?
- May I receive copies of any family/client satisfaction surveys?
- May I receive a copy of your agency's most recent certification review or provider practice findings?
- How much training is provided to your staff?
- How long has this agency been providing this service?
- How many people do your support?
- What makes your service unique from other residential service providers?
- Do you specialize in any one area?

Support Services & Activities

- How will your agency assist me to develop and build friendships?
- How will your agency support me to achieve my personal goals?
- I enjoy _____. How will you support me to continue doing this?
- I would like to learn how to _____. How will the staff help me to learn this?
- Will you help me get to the doctor, shopping or to the movie theater? How does that work?
- Will you help me find fun things to do in my community?

Environment & Surroundings

- As I arrive, do I like the location and outward appearance?
- Is the home close to my friends and relatives? Is it close to my job?
- Is the home on a noisy street?
- Is the home neat, clean, and odor free?
- What furniture will I need to bring with me if I move here?
- Is the home accessible for me (is there a walk-in shower, ramp, railings, room for my wheelchair in the bathroom,)?
- If I want to use public transportation, is the home near a bus stop?
- How far away is the grocery store?

Finances

- Who helps me with my money if your agency supports me?
- How much will it cost me to live here? What bills will I have?
- Who pays for my rent and my food?
- How do I get my groceries?
- If I live with other people how do I know how much it will cost me to live here?
- Will my name be on the rental agreement or lease?
- Are you the landlord?

HOUSING AND RELATED SERVICES

COMMUNITY ACTION COUNCIL OF LEWIS, MASON & THURSTON COUNTIES

3020 Willamette Drive NE

Lacey, WA 98516

(360) 438-1100

www.caclmt.org

807 W. Railroad Ave

Shelton, WA 98584

(360) 426-9726

Homelessness prevention, WIC, weatherization, energy assistance.

COMMUNITY YOUTH SERVICES (CYS)

711 State Ave. NE * Olympia, WA 98501

(360) 943-0780 <https://communityyouthservices.org/>

Counseling, emergency shelter, foster care, diversion and independent living skills.

FAMILY SUPPORT CENTER

201 Capitol Way * Olympia, WA 98501

(360) 754-9297 <http://www.fscss.org/>

Provides a wide variety of supports for families with children: basic needs, housing, domestic violence survivor support, etc.

HOMES FIRST

5203 Lacey Boulevard SE, Suite A * Lacey, WA 98503

(360) 236-0920 <http://homesfirst.org/community-resources/>

Nonprofit rental housing provider for low-income people in Thurston County. Provides an online list of housing resources.

HOUSING AUTHORITY OF THURSTON COUNTY

1206 12th Ave SE * Olympia, WA 98501

(360) 753-8292 <http://www.hatc.org/>

Low income persons with disabilities may be eligible to receive rent subsidy. There are waiting lists and funds are limited. A resource for listings of low-cost available housing.

SALVATION ARMY

824 5th Avenue SE * Olympia, WA 98501

(360) 352-8596 <https://olympia.salvationarmy.org/>

Energy assistance, limited funds available, emergency shelter, free clothing may be available. Call for information.

SIDEWALK

1139 – Fifth Avenue SE * Olympia, WA 98501

(360) 515-5587 www.walkthurston.org/

A local organization whose mission is to end homelessness.

THURSTON COUNTY VETERAN'S ASSISTANCE FUND

Located at Lacey Veteran's Hub 4232

6th Ave SE, Ste 202* Lacey, WA 98503

(360) 456-3850 www.co.thurston.wa.us/health/ssveteran/index.html

Fund that helps eligible veterans or family members



INCOME SUPPORT

SOCIAL SECURITY

The Social Security Administration administers two different disability programs Social Security disability Insurance (SSDI) and Supplemental Security Income (SSI). It is important to be aware of the differences.

Social Security Disability Insurance (SSDI)

SSDI benefits are like an insurance policy that you've paid into through the FICA tax while working. Ideally this would be your retirement benefit. However, if you become disabled before retirement age, it is possible to collect this money as a disability benefit, SSDI. There may also be a family benefit available to minor children, usually about 50% total of the beneficiary award amount. There is another program attached to this called Social Security Childhood Disability Benefit (SSCDB) for children who are over age 18, become disabled before age 22 and have not earned Substantial Gainful Activity (SGA) and are not married. In this case the disabled child must have a parent who is disabled, retired or deceased and eligible for Social Security benefits. The Social Security office is there to answer any inquiry into eligibility and to assist you in filing for any benefits due. They are the experts and they will guide you through the application process. Call 1-800-772-1213 if you have any questions on this program and they will set-up an appointment for you with your local office to assist you in filing.

Supplemental Security Income (SSI)

This is a needs based program that is funded by the general tax revenue. There is no minimum age for eligibility. An individual who is disabled, blind or over age 65 and has limited resources and income can qualify. Before age 18, the income and resources of a child's parents are considered when deciding if a person meets the criteria to get payments, but at age 18 the parent's income is no longer considered.

SSI entitlement is a gateway to a variety of resources for transition students with disabilities, including Medicaid, student income exclusions, PASS plans, etc. It is very important to remember that if a child was denied before age 18 because of parent's income it does not preclude them from filing at age 18. Call 1-800-772-1213 to start the application process and arrange an appointment with your local office. A Claims Representative will guide you through the process. It is best to make an appointment so that you can be prepared in advance.

A person can actually receive both SSA and SSI. Once an application is filed or an inquiry is made, the personnel at Social Security will look into all possible entitlement issues. They are your advocates.

Social Security Administration

402 Yaeger Way SW

Olympia WA 98502

Olympia office, for appointments, etc.: 1-800-772-1213

TTY: 1-800-325-0778

www.socialsecurity.gov

SSI AND SSDI ELIGIBILITY

Supplemental Security Income (SSI) payments are available for individuals with limited income and resources. There are many issues that affect entitlement such as family size, family income, and resources. It costs nothing to file and a contact with the Social Security office can help you plan for possible future entitlement. By going through the appointment process, you can ask what you need to bring. Remember that it is needs based so you will be asked to provide proof of all income, resources, bank accounts, etc.

If you have medical records that establish the disability, please bring them to the appointment. This greatly speeds up the processing time. If you do not have them, the Social Security Administration will get them for you. There is no retroactive payment for SSI benefits so do not delay contacting Social Security if you believe that someone in your family could be entitled.

Social Security Disability Insurance (SSDI) benefits require that the individual or a parent paid FICA taxes. The Social Security Administration looks for entitlement to these benefits whenever an SSI application is taken. If a disabled child (over age 18 and disabled before age 22) has a parent that is retired, disabled, or deceased and eligible for Social Security there is likelihood that the child could be eligible.

For eligibility purposes, it is not enough to have a disabling condition, you must be able to explain how this condition affects the individuals' daily functions, whether in the home or on the job, and this condition must also prevent you from earning Substantial Gainful Activity of \$1,170 gross/monthly (2017).

What happens to your benefits if you work?

There is no "one answer" to this question, as circumstances vary from person to person. The Social Security Administration has put forth great effort to encourage people with disabilities to try to work. There are many provisions available, called WORK INCENTIVES that allow people with disabilities to keep benefits, including Medicare and Medicaid, while working.

When receiving benefits, a person must report all work. It is always a good idea to talk to the Social Security office before starting work. They will be able to tell you specifically how your benefits will be affected, they will work with you to keep as many benefits as possible, and give you any assistance they can at making the process much easier. It is most peoples' experience that they will have a LARGER monthly budget when working compared to just receiving benefits.

BENEFITS COORDINATION

The Social Security Administration has developed work incentives to encourage people with disabilities to work. Most people are able to work and receive Social Security Benefits. There are Benefits Planners available to help you understand the process, although the service is limited. If you have questions, please contact DDA or DVR for assistance.

www.dshs.wa.gov/office-of-the-secretary/benefits-planning

Another free benefits planning/coordination option in Thurston and Mason Counties is available through the ARC of Washington. For further information, call 360-357-5596.

APPLYING FOR A SOCIAL SECURITY NUMBER

Who Must Apply?

In the United States, an individual's Social Security Number is his/her most important piece of identification. Virtually everyone should have a Social Security Number, and there is no minimum age required for application. Children often need a Social Security Number to qualify for certain types of public assistance, or to be included in savings accounts and investments. Everyone needs a number before starting to work, and it is recommended that students get a number before starting high school.

How do I Apply?

Apply for a number through your local Social Security Office. Parents can make application for persons under age 18 years. Those 18 and older must apply in person.

To apply for a Social Security Number you must provide:

1. Evidence of date of birth.
2. Evidence of identity.
3. Evidence of U.S. Citizenship or lawful admission status (i.e., a public, religious or hospital record of birth established before age five).

<https://www.ssa.gov/ssnumber/>

NOTE: Persons born outside the U.S. will need to submit additional documents.

ADDITIONAL FINANCIAL RESOURCES

DSHS COMMUNITY SERVICE OFFICE (CSO)

6860 Capitol Blvd South Tumwater,
WA 98501

Toll Free: 1-877-501-2233

TTY: 1-800-209-5546 or 711

www.dshs.wa.gov/esa/

2505 Olympic Highway North # 440
Shelton, WA 98584

Toll Free: 1-877-501-2233

TTY: 1-800-209-5446 or 711

www.dshs.wa.gov/esa/

Contact for information concerning food assistance, general assistance, child care support, TANF (AFDC) - Temporary Assistance for Needy Families, etc.

WASHINGTON STATE ABLE SAVINGS PLAN

1011 Plum St SE, PO Box 42525

Olympia, WA 98504

Toll Free: 1-844-600-2253

(360) 725-3131

www.washingtonstateable.com

ABLE FOR ALL SITE: www.ableforall.com for non-Thurston County Residents
1-844-394-2253

ABLE (Achieving a Better Life Experience) savings plans allow individuals with disabilities opportunities to save for their everyday needs, invest in a tax-free account and prepare for the future without losing state or federal benefits. For more information, contact the local ABLE office or visit the Washington State ABLE website.

DEVELOPMENTAL DISABILITIES ENDOWMENT TRUST FUND (DDETF)

c/o the ARC Washington State

2638 State Ave NE

Olympia, WA 98506

1-888-754-8798, ext 1

Email: etinfo@arcwa.org www.ddetf.wa.gov

The DD Endowment Trust Fund is a supplemental special needs trust program which allows individuals with disabilities to set aside funds for future use without affecting their eligibility for government services and benefits which as SSI and Medicaid. For more information, please contact your local office or visit the DDETF website.

WASHINGTON STATE DEPARTMENT OF VETERANS AFFAIRS

1102 Quince St SE

Olympia, WA 98501

Toll free: 1-800-562-0132

(360) 725-2200

<http://www.dva.wa.gov/>

Monetary support for individuals with a developmental disability (onset prior to age 18) and whose parent was honorably discharged or was killed in action. If the parent is disabled because of Agent Orange and the child now has problems related to Agent Orange, there may also be some monetary assistance. Some scholarships are available.



TRANSPORTATION

TRANSPORTATION OPTIONS

This section deals with the idea of being able to get from place to place in your community. There are many ways that a person with a disability can be **mobile** in their community, including:

Independently (own car, bicycle, etc.)

Public Transportation (bus, taxi, train, etc.)

Specialized Transportation (wheelchair van)

Specialized Equipment (electric scooter, etc.)

The method chosen will be based on individual needs, preferences, and available resources. The following pages describe the options available and also describe a bus travel training program sponsored by Intercity Transit.

INTERCITY TRANSIT (IT)

Customer Service: 222 State Avenue, Olympia, WA 98501

(360) 786-1881

www.intercitytransit.com

Individuals with disabilities who qualify through the ADA can request an application at the above number to receive a monthly pass at a reduced rate. Please see below for Intercity Transit's Dial-A-Lift program and the next page for the Bus Travel Training Program information.

INTERCITY TRANSIT DIAL-A-LIFT

Ride Scheduling: (360) 754-9393

Online scheduling: <http://96.93.124.102:8090/customer/>

Rider Certification: (360) 705-5896

Dial-A-Lift is a door-to-door, wheelchair accessible, shared-ride public transportation service for people whose disabilities prevent them from using the regular bus service. Dial-A-Lift service is available where and when regular buses operate. Consumers must be certified through Dial-a- Lift. Call or e-mail dial-a-lift@intercitytransit.com for more information.

MASON TRANSIT AUTHORITY

Customer Service: 601 West Franklin St, Shelton, WA 98584

(360) 427-5033; TTY/TDD: (800) 833-6388 or 711

www.masontransit.org

All vehicles are ADA accessible and most transportation options are low cost or free. . Dial-A-Ride services are available to all individuals who experience difficulty using regular routed service (no eligibility requirements). These services cover all of Mason County and connect to Thurston, Jefferson, and Kitsap Counties. There is no cost for travel within Mason County. Call for schedules and to schedule Dial-A-Ride trips.

(360) 427-5033, (800) 374-3747 or TTY: (800) 833-6388 or 711

www.masontransit.org/dialarideandlinkservice/

PARATRANSIT SERVICES (contracted by State)

1-800-846-5438, TTY: 1-800-934-5438

www.wanemt.com Provides services for non-emergency medical appointments for Medicaid recipients.

RURAL & TRIBAL TRANSPORTATION (R/T)

Information and Scheduling: (253) 472-7846

www.trpc.org/325/Rural-Transit

Email: ruraltransit@transpro.org

RT offers public transportation services for the Nisqually Indian Tribe, the Confederated Tribes of the Chehalis Reservation, and the communities of Rochester, Tenino, Bucoda, Rainier and Yelm. RT connects to [Intercity Transit](#) in Thurston County and [Twin Transit](#) in Lewis County. The fare is \$1.25 each way; R/T accepts Intercity Transit, Twin Transit, Orca passes, and STAR (State Agency Rider) passes.

INTERCITY TRANSIT BUS TRAVEL TRAINING PROGRAM

(360) 705-5879

TTY: 360-357-7133

E-mail: traveltraining@intercitytransit.com

<https://www.intercitytransit.com/how-to-ride/travel-training>

Intercity Transit is committed to providing the information and support you need to feel comfortable and successful using our transportation services.

What is Bus Travel Training? The Bus Travel Training program is free, one-on-one training for people who want to learn to learn bus system. Training occurs one-on-one in a supportive environment. This service is available to anyone of any age and any ability.

What are the Benefits of Travel Training?

- Learn how to plan your trip
- Navigate ride specific routes
- Read and understand route maps and schedules
- Get to and from your bus stop
- Recognize bus numbers, bus stops, and landmarks
- Pay fares and purchase passes
- Get on and off the bus safely
- Use the lift to board with a mobility device
- Position your mobility device in the bus
- Locate and transfer to other buses
- Get service information

COASTAL COMMUNITY ACTION PROGRAM

(360)500-4524

Toll Free: (800) 828-4833

<http://coastalcap.org/transportation/>

Coastal Community Action Program (CCAP), in partnership with Thurston County Developmental Disabilities Department, offers several social service programs including the Job Access Reverse Commute (JARC) for access to employment and educational programs, Medical Transport (ParaTransit) to/from medical appointments and the O3A Senior Transportation program offers rides to meet the medical and social needs of senior citizens. CCAP has a limited contract with Thurston County. Call today to see if you qualify.

RECREATION OPTIONS AND PROGRAMS

Our lives are usually made up of times that we work, times that we sleep, and times that some call leisure time. Leisure time is when we can do the things that we want to do. Our bosses are not giving us work to do and our bodies are not telling us to sleep or rest. During this leisure time, people do many things. Eating, spending time with families, shopping, doing hobbies, talking on the phone, watching television, and gardening are examples of leisure time activities.

For a young adult with special needs, knowing what to do with free time, in a constructive and active way, is an important skill to have. Using free time constructively makes being a part of community, and the activities it offers, a little easier to accomplish. Being active and using free time well also helps us to feel good about ourselves.

This section will look at those parts of leisure time that have to do with activities outside the home. Programs that offer social activities and independent activities will be mentioned.

The name of the program will be mentioned, an address and phone number given, and the type of leisure/recreation activity offered. Remember to ask for the specific program you are interested in and to give the person you are talking to information about your special needs.

BOYS AND GIRLS CLUBS OF THURSTON COUNTY AND MASON COUNTY

Youth development agency serving school-age youth 5 to 18 years old. Programs focus on academic success, citizenship, and healthy/active living.

For information regarding locations and programs available in Thurston County, visit the Boys and Girls Club of Thurston County website: www.bgctc.org

For information regarding locations and programs available in Mason County, visit the Boys and Girls Club of South Puget Sound: www.bgcsp.org/find-a-club/mason

SUMMER PLANS FOR CHILDREN WITH DISABILITIES

<https://cshcn.org/resources-contacts/summer-camp-directory/>

www.kidscamps.com

THURSTON COUNTY SPECIALIZED RECREATION

Recreation programs and activities for people with developmental and physical disabilities. Programs include fitness, social activities, and community outings.

412 Lilly Road NE
Olympia, WA 98506
(360) 867-2588

EASTERSEALS WASHINGTON

Summer and year-round recreation for adults and children with disabilities. Year round respite camps.

200 W Mercer St Suite 210
Seattle, WA 98119
(206) 281-5700

www.easterseals.com/our-programs/camping-recreation/

HEARTSPARKLE PLAYERS

Playback Theatre Company that offers interactive workshops and performances.

Contact: Debe Edden

Email: debek@olywa.net (360) 943-6772
www.heartsparkle.org

LACEY PARKS AND RECREATION

Many low cost programs for all ages.

420 College Street SE

Lacey, WA 98503

(360) 491-0857

www.ci.lacey.wa.us

OLYMPIA PARKS, ARTS AND RECREATION

Many free & low cost programs for all ages.

The Olympia Center

222 Columbia St NW

Olympia, WA 98501

(360) 753-8380

www.olympiawa.gov/parks

TUMWATER PARKS & RECREATION

Many low cost programs for all ages.

555 Israel Road SW

Tumwater, WA 98501

(360) 754-4160

www.ci.tumwater.wa.us/departments/parks-recreation

SPECIAL OLYMPICS

Year round sports and training program for individuals with developmental disabilities.

Capital Area (includes Thurston and Mason County)

Mark Barker, Area Director

Email: bballdad@comcast.net

(360) 791-0742

SOUTH SOUND YMCA

The YMCA offers a variety of programs for leisure and physical fitness. Memberships available on sliding scale.

Plum Street YMCA

505 Plum Street

Olympia, WA 98501

(360) 357-6609

www.southsoundymca.org

Briggs Community Branch

1530 Yelm Highway SE

Olympia, WA 98501

(360) 753-6576

www.southsoundymca.org

NOTE: Many clubs and organizations offer opportunities for leisure and recreation for all people. Check your community college, newspaper and your local library for listings.

TRAVEL

These are a variety of organizations that arrange travel opportunities for people with developmental disabilities. These are a few based in the Pacific Northwest:

Journeys Assisted Travel

(503) 319-8817

www.journeysassistedtravel.com/

Trips, Inc.

(541) 686-1013

www.tripsinc.com

Sundial Special Vacations

Toll free: 1-800-547-9198

<http://sundialtour.com/>



ADVOCACY AND GUARDIANSHIP

ADVOCACY AND SUPPORT

There are times when we all need someone to “go to bat” for us, to be “on our side”, and to “stand up for us.” This section will present information on organizations, agencies, and programs who make it their business to advocate for and provide information to individuals with developmental disabilities and their families. Some advocate on a large scale through systems, others offer individual advocacy, training or support groups. There are many organizations and services available. It may take some time to find one that meets your needs. Ask all of the questions you have to find one (or more) advocacy group that’s right for you.

THE ARC OF WASHINGTON

Information, referral, and systems advocacy for children and adults with intellectual and developmental disabilities and their families.

2638 State Avenue NE

Olympia, WA 98506

(360) 357-5596

www.arcwa.org

AUTISM SOCIETY OF WASHINGTON

The mission of Autism Society of Washington is to improve the lives of all affected by Autism Spectrum Disorders in Washington State. Information and referral to services and support groups.

120 State Ave, #303

Olympia, WA 98501

Toll-free: (888) 279-4968

www.autismsocietyofwa.org

BRAIN INJURY ALLIANCE OF WASHINGTON

Provides support to survivors of brain injury and their families, education to those who are being affected by brain injury, including the general public, and advocacy.

Toll-free: (877) 824-1766 or (877) 982-4282

www.biawa.org

CAPITAL RECOVERY CENTER

Peer counseling, support groups, advocacy and education on mental health issues

(360) 357-2582

www.crcoly.org

CENTER FOR INDEPENDENCE

Peer mentoring, support groups, independent living, etc.

7801 Bridgeport Way West, Suite 200

Lakewood, WA 98499

Toll-free: 800-724-8172

www.cfisouth.org

DISABILITY RIGHTS WASHINGTON

DRW is a private, non-profit organization whose mission is to advance the dignity, equality, and self-determination of people with disabilities.

315 - 5th Ave South, Suite 850

Seattle, WA 98104

Toll-free: (800) 562-2702

Washington Relay (TTY) available via 711

www.disabilityrightswa.org

INFORMING FAMILIES, BUILDING TRUST

A project of the Washington State Developmental Disabilities Council, IFBT is a partnership for communication on developmental disabilities issues in Washington State. IFBT works to provide information that is useful to individuals with developmental disabilities and their families. www.informingfamilies.org

**NORTHWEST JUSTICE PROJECT
Coordinated Legal Education, Advice and
Referral system (CLEAR)**

CLEAR is Northwest Justice Project's telephone service for eligible low-income people to obtain free legal assistance with civil legal problems.

Toll-free: (888) 201-1014 weekdays from 9:15 a.m. until 12:15 p.m.

www.nwjustice.org

**PAVE (Partnerships for Action,
Voices for Empowerment)**

Parent to Parent Training Project, workshops, transition, vocational and supported employment, information sharing, parent support groups, free publications. 6316 S 12th St.

Tacoma, WA 98465

(253) 565-2266

Toll-Free: (800) 572-7368 (Voice/TTY)

www.wapave.org

PEOPLE FIRST OF WASHINGTON

The purpose/mission of People First is “to assist people with a disability to realize and appreciate that we are PEOPLE FIRST and our disabilities are secondary and that we are equal citizens in our communities.” We are an organization:

- *Working Together...*
- *Participating in the community...*
- *Speaking up for our rights...*
- *Educating ourselves and others...*
- *Helping each other...*
- *And having fun!*

<http://www.peoplefirstofwashington.org/>

(800)758-1123

SOUTH SOUND PARENT COALITION

Supports individuals with developmental disabilities and their families throughout Thurston, Mason and Lewis Counties. Informs, empowers, and connects people who are experiencing similar life situations.

Dot Workman:

(360) 623-9022

dotworkman@outlook.com

www.facebook.com/southsoundparentcoalition/

SOUTH SOUND PARENT TO PARENT

One-to-one matches of parents, workshops, social and recreational events, resource library, family resource coordination, home equipment loan, information and referral for families in Thurston and Mason Counties.

Local Lead Agency for “Birth to 3” services.

2108 Caton Way SW

Olympia, WA 98502

(360) 352-1126

www.ssp2p.org

**TACOMA AREA COALITION OF
INDIVIDUALS WITH DISABILITIES
(TACID)**

TACID's mission is to promote the independence of individuals with disabilities through peer support, advocacy and self-sufficiency programs.

6315 S. 19th Street

Tacoma, WA 98466

(253)565-9000 (Voice)

711 Washington Relay.

www.tacid.org

GUARDIANSHIP AND ALTERNATIVES

All people, regardless of disability, become their own legal guardians at age 18. This means at 18 they can decide for themselves on important medical and legal questions, can sign documents, and can determine how their financial resources are to be spent.

For young people with disabilities, this power of guardianship can sometimes be a mixed blessing. For those capable of self-advocacy and self-protection, it can be a milestone in their development toward adulthood. By contrast, those unable to adequately represent themselves can be left vulnerable to all sorts of exploitation.

Most people with disabilities are fully competent in many areas of life and need protection only in certain instances. Often, guardianship may not be necessary. In fact, Washington State's guardianship law requires considering less restrictive alternatives first.

***IMPORTANT NOTE:** The following resources and information are **not** intended to provide or replace legal advice. If you have questions or concerns regarding guardianship for a dependent individual, please consult an attorney or legal advocate specializing in guardianship issues.

SUPPORTED DECISION MAKING

When considering legal and future decision-making options, the most critical component of planning is listening to the person. The focus should always be retaining an individual's dignity, respect, and autonomy.

For more information regarding supported decision making, contact a local or national disability rights council:

Office of Developmental Disability Ombuds and Disability Rights Washington

711 Capitol Way S, Ste 502

Olympia, WA 98501

1-800-532-2702 or (206) 324-1521

www.disabilityrightswa.org/resources/guardianship/

National Resource Center or Supported Decision-Making

(202) 448-1448

<http://www.supporteddecisionmaking.org/>

GUARDIANSHIP

There are basically two categories of guardianship:

1. **A Guardian of the Estate** is responsible for management of the individual's property and finances.
2. **A Guardian of the Person:** non-financial decision making. A Guardian of the Person makes sure that the person's physical, mental and emotional needs are being assessed and addressed.

Limited Guardianship

A limited guardianship grants the authority to make specific decisions identified in a court order, and may be time-limited.

Full Guardianship

A full guardianship grants the authority to make all decisions provided under the law. Full Guardianship denies a person significant rights, which may include the right to vote, marry, get a driver's license, enter into contracts, or decide who will provide care.

Informing Families Building Trust, a project of the Washington State Developmental Disabilities Council, has general information and additional resources about Guardianship. It is available online at <http://informingfamilies.org/topic/guardianship/>

Additional resources for questions and information guardianship can be obtained through the following agencies:

Thurston/Mason County Volunteer Legal Services: (888) 201-1014
<http://tcvls.org/free-legal-help/>

Northwest Justice Project, CLEAR Hotline (888) 201-1014
<https://nwjustice.org/get-legal-help>

Disability Rights Washington: (800) 562-2702 or 711 for TTY
<https://www.disabilityrightswa.org/>

Department of Social and Health Services (DSHS):
www.dshs.wa.gov/ca/4300-case-planning/4340-guardianship



MEDICAL SERVICES AND RESOURCES

MEDICAID AND MEDICARE-WHAT'S THE DIFFERENCE?

Medicare is a federally administered medical program. You can get Medicare if you are age 65 or have been drawing a Social Security disability check for two years. This includes disabled children. It has a co-payment and can require a premium. www.medicare.gov/ 1-800-633-4227

Medicaid is a state and federal health insurance program aimed at helping certain groups of needy and low-income people, including those 65 and over, those with disabilities and blindness, those who are members of families with dependent children, and certain children. These are administered by State government.

www.hca.wa.gov/health-care-services-supports/apple-health-medicaid-coverage 1-800-562-3022

Medicaid does not pay money to you. It sends payments directly to your health care providers. Medicaid can pay for medical services in your own home or if you live in a residential care facility that takes Medicaid residents.

In the State of Washington if you are entitled to any amount of SSI, you are considered eligible for Medicaid. If you lose an SSI cash benefit because you earned a lot of money in a month (more than \$1,700) you may still remain eligible for Medicaid.

What happens to your benefits if you work?

This is not an easy question to answer because it can be very specific to your work and the type of benefits you receive. The Social Security Administration has put forth great effort to encourage people with disabilities to work. There are many provisions available, called *work incentives* that allow people with disabilities to keep benefits, including Medicare and Medicaid while working.

When receiving benefits, a person must report all work. It is always a good idea to talk to the Social Security office before starting work. They will be able to tell you specifically how your benefits will be affected, they will work with you to keep as many benefits as possible, and give you any assistance they can at making the process much easier. It is most peoples' experience that they will have a LARGER monthly budget when working compared to just receiving benefits.

HEALTH SERVICES AND SUPPORT

Looking for Healthcare Coverage? Contact the **Washington Health Benefit Exchange** www.wahbexchange.org or call (855) 923-4633

AL-ANON/ALATEEN

Support group for families and friends of individuals struggling with alcohol addiction
<https://www.southpugetsoundal-anon.org/>
(360) 352-7745

ALCOHOLICS ANONYMOUS

344 Cleveland Ave SE
Olympia, WA 98501
(360) 352-7344 or 800-562-1240 (24 hour referral lines)
www.aa.org

BEHAVIORAL HEALTH RESOURCES

Provides mental health and chemical dependency support services to community members.
Thurston County Crisis Clinic 24-hour emergency number: (360) 754-1388 or (800) 825-4820
Mason County Crisis Clinic 24-hour emergency number: (360) 586-2800
Youth Help Line: (360) 586-2777 www.bhr.org

Thurston Co. Children, Youth & Family Services

857 Martin Way E
Olympia, WA 98506
(360) 754-1388

Mason County Children & Adult Services

110 West K Street
Shelton, WA 98584
(360) 425-1696

Thurston County Recovery

Services/Harvest 6128 Capitol Blvd SE
Tumwater, WA 98501
(360) 704-7170 or (800) 825-4820

BEHAVIORAL HEALTH ORGANIZATION (THURSTON/MASON COUNTY)

The Thurston/Mason Behavioral Health Organization provides an Information Guide to Behavioral Health Services and Resources in our area. The "Toolbox" Information Guide is available online at: http://tmbho.org/wp-content/uploads/2018/10/ToolBox_Booklet_latestversion-9-18.pdf

612 Woodland Square Loop SE, Ste 401
Lacey, WA 98503
(360) 763-5828 or (800) 658-4105 (TMBHO Ombuds)
<http://tmbho.org/>

CATHOLIC COMMUNITY SERVICES OF THURSTON AND MASON COUNTY

Access to essential services for children, adults, and families. Services include housing/shelter, behavioral health, in-home family health care/mental health services and disability/veteran services. <https://ccsww.org/get-help/mason-thurston-lewis-counties/>
604 Devøe St SE Olympia, WA 98501 (360) 753-3340

CHILDREN WITH SPECIAL HEALTH CARE NEEDS & NURSE/FAMILY PARTNERSHIP

(360) 867-2543 412 Lilly Rd NE Olympia, WA 98506
Assists families who have children with special needs access health/mental health care services, provides referrals, nursing assessments, and education/information regarding child development, growth, nutrition, and behavior.
www.co.thurston.wa.us/health/personalhealth/womenchildren/cshcn.html

CHOICE REGIONAL HEALTH NETWORK

Access to Baby and Child Dentistry Program (ABCD): Connects children under age 6 who have a DSHS medical services card with local dental providers.

1217 4th Avenue East, Suite 200

Olympia, WA 98506

(360) 539-7576

<http://crhn.org/pages/>

COMMUNITY ACTION COUNCIL OF LEWIS/MASON/THURSTON COUNTIES

Nutrition, WIC, energy assistance, weatherization, rental assistance.

<http://www.caclmt.org/>

3020 Willamette Drive NE

Lacey, WA 98516

(360) 438-1100

807 W. Railroad Ave

Shelton, WA 98584

(360) 426-9726

CRISIS CLINIC OF THURSTON AND MASON COUNTIES

24-hour emergency number: (360) 586-2800

Youth Help Line: (360) 586-2777

<http://crisis-clinic.org/>

HEARING, SPEECH AND DEAFNESS CENTER

Speech and audiology services, preschool and early learning, assistive technology.

HSDC South Sound

621 Tacoma Avenue South, Suite 505

Tacoma, WA 98402

Toll-free: (866) 421-5560 (voice)

TTY Toll-free: (866) 698-1748

www.hsdco.org

HSDC Seattle

1625 - 19th Avenue

Seattle, WA 98122

Toll-free: (888) 222-5036 (voice)

TTY Toll-free: (800) 761-2821

www.hsdco.org

OFFICE OF DEAF & HARD OF HEARING (DSHS)

The Office of the Deaf and Hard of Hearing (ODHH) provides services to the deaf, hard of hearing and deaf-blind communities throughout Washington State.

(800) 422-7930 Voice/TTY

<https://dsht.wa.gov/altsa/odhh/contact-odhh>

MASON COMMUNITY DENTAL

Community Action Dental LLC provides dental care for individuals and families in Mason County. It accepts DSHS, private insurance, cash, and offers a sliding fee scale based upon income.

807 W. Railroad Ave

Shelton, WA 98584

(360) 426-2708

MASON COUNTY PUBLIC HEALTH DEPARTMENT

Access to Baby and Child Dentistry (ABCD), Community and Family Health Services, maternal child health services (Nurse Family Partnership Program), children with special health care needs, HIV case management, communicable disease control, healthy eating & physical activity, tobacco prevention, and several other community health programs and services.

415 N. 6th Street, Building 8 www.co.mason.wa.us/health/community-family/index.php

Shelton, WA 98584 (360) 427-9670

MATERNITY SUPPORT SERVICES (SEAMAR)

Taylor Square 905-24th Way SW, Ste B-3 Olympia, WA 98502 (360) 742-5010	Yelm Office 202 Cullens St NW Yelm, WA 98597 (360) 400-4810
--	--

MEDICAL EQUIPMENT AND SUPPLIES BANK

Medical equipment for loan at no charge, in Lacey and Yelm. Also accepts donations of medical equipment and supplies. Limited hours; call or visit web site for schedule.

<http://medicalequipmentbank.org/>

Woodlawn Funeral Home 5930 Mullen Road SE Lacey, WA 98504
(360) 456-8810 (message line)

PLANNED PARENTHOOD

Family planning, birth control, general health care, pregnancy testing, STD/HIV testing, and community education. DSHS medical services cards accepted for all services.

Olympia Clinic
402 Legion Way Suite 201
Olympia, WA 98501
(800) 769-0045

Shelton Clinic
2505 Olympic Highway Suite 400
Shelton, WA 98584
(800) 769-0045

PREGNANCY AID

Counseling and support; information and referrals.

Olympia Pregnancy Aid
1208 11th Ave SE
Olympia, WA 98501
(360) 956-7413
<http://pregnancyaidwa.org/>

CareNet Pregnancy
Center 135 Lilly
Road NE Olympia,
WA 98506
(360) 753-0061
www.carenetolympia.org/

CareNet Pregnancy Center
2233 Jefferson St
Shelton, WA 98584
(360) 427-9171
<https://sheltoncarenet.org/>

OLYMPIA FREE CLINIC

108 State Ave NW
Olympia, WA 98501
(360) 890-4074
www.theolympiafreeclinic.org/

PROVIDENCE ST. PETER FAMILY MEDICINE

525 Lilly Road NE
Olympia, WA 98506
(360) 493-7230

SEA MAR CLINICS

Low income medical, behavioral health, community education, preventative health services, long-term care, and dental care services.

www.seamar.org

Medical—Olympia

3030 Limited Lane NW

Olympia, WA 98502

(360) 491-1399

Medical—Walk-in Clinic

3622 Ensign Rd NE, Ste A

Olympia, WA 98506

(360) 742-5000

Medical—Yelm

202 Cullens Street NW

Yelm, WA 98597

400-4800

Medical Clinic—Lacey

669 Woodland Sq. Loop SE

Lacey, WA 98503

(360) 359-4840

Behavioral Health—Yelm

202 Cullens St. NW

Yelm, WA 98597

(360) 400-4800

Behavioral Health—

Tumwater 6334 Littlerock

Road SW Tumwater, WA

98512

(360) 704-7590

Dental—Tumwater

409 Custer Way, Suite C

Tumwater, WA 98501

(360) 570-8016

Dental—Lacey

669 Woodland Square Loop SE

Lacey, WA 98503

(360) 359-4860

Dental—Yelm

202 Cullens St NW

Yelm, WA 98597

(360) 400-4840

Sea Mar also provides WIC services at a building near the Thurston County Courthouse:

905 – 24th Way SW, Ste B3

Olympia WA 98502

Call (360) 754-2936, as well as for information about WIC in Rochester, Tenino and Yelm

SOUTH PUGET SOUND COMMUNITY COLLEGE DENTAL CLINIC

Provides dental services with the exception of complex surgery, dentures and orthodontic treatment. Fees vary according to services.

(360) 596-5464

<https://spscc.edu/community/dental-clinic>

MEDICAL EQUIPMENT AND SUPPLIES BANK

Medical equipment for loan at no charge, in Lacey and Yelm. Also accepts donations of medical equipment and supplies. Limited hours; call or visit web site for schedule.

STATEWIDE HEALTH INSURANCE BENEFITS ADVISORS (SHIBA)

As part of the state insurance commissioner's consumer protection services, SHIBA provides free, unbiased, and confidential assistance with Medicare and health care choices.

5000 Capitol Blvd SE

302 Sid Snyder Ave, Ste 200

Tumwater, WA 98501

Olympia, WA 98504

(360) 725-7000 or (800) 562-6900

(360) 725-7100

URGENT/IMMEDIATE CARE**MARY BRIDGE PEDIATRIC URGENT CARE**

Walk-in medical clinic, Monday – Friday, 3:00pm-10:00pm;

Saturday & Sunday, 12 – 7pm.

3504 – 12th Avenue NE

Olympia, WA 98506

(360) 252-3845

PROVIDENCE WEST OLYMPIA IMMEDIATE CARE CLINIC Walk-in medical clinic, Monday – Friday, 8:00am – 8:00 pm; Saturday & Sunday, 9:00am – 5:00 pm.

1620 Cooper Point Road SW

Olympia, WA 98502

(360) 486-6710

SEA MAR THURSTON WALK-IN CLINIC

Hours: Saturday and Sunday 11:00 am-10:00 pm

3622 Ensign Rd NE, Ste A

Olympia, WA 98506

(360) 742-5000

THE HEALTH CARE CENTER WALK-IN CLINIC

Hours: Sunday-Friday: 8:00-6:00 pm, Saturday: 10:00am-2:00pm

107 N 8th St

Shelton, WA 98584

(360) 426-9717

URGENT CARE SOUTH, LLC

Evening walk-in medical clinic. Monday – Friday, 4:00pm - 9:00 pm;

Saturday & Sunday, 4pm-9pm

6981 Littlerock Road SW

Tumwater, WA 98512

(360) 943-3633

www.wkirkharrismd.com/

U.S. HEALTH WORKS (previously Pacific Walk-in Clinic)

Walk-in medical clinic. Monday – Friday, 8 am – 7 pm; Saturday, 9am-4pm.

3928 Pacific Avenue SE

Lacey, WA 98503

(360) 455-1350

www.ushealthworks.com/Medical-Center/Washington/Urgent-Care/Lacey.html

WESTCARE CLINIC

Walk-in medical clinic. Monday – Friday, 8:00 am – 8:00 pm; Saturday & Sunday, 9am – 5pm

3000 Limited Lane NW

Olympia, WA 98502

(360) 357-9392

<https://westcareclinic.com/>

VISUAL IMPAIRMENT-SERVICES FOR THE BLIND**WASHINGTON STATE DEPTMENT OF SERVICES FOR THE BLIND**

Provides “one front door” for people of all ages who are blind or have low vision in Washington State. Job counseling and adaptive skills. www.dsb.wa.gov

4565 7th Avenue SE

Lacey, WA 98503

(360) 725-3830 or (800) 552-7103

THE WASHINGTON TALKING BOOK & BRAILLE LIBRARY

The Washington Talking Book & Braille Library provides a free public library service which includes easy access to informational and recreational reading materials. www.wtbbl.org

2021 9th Avenue

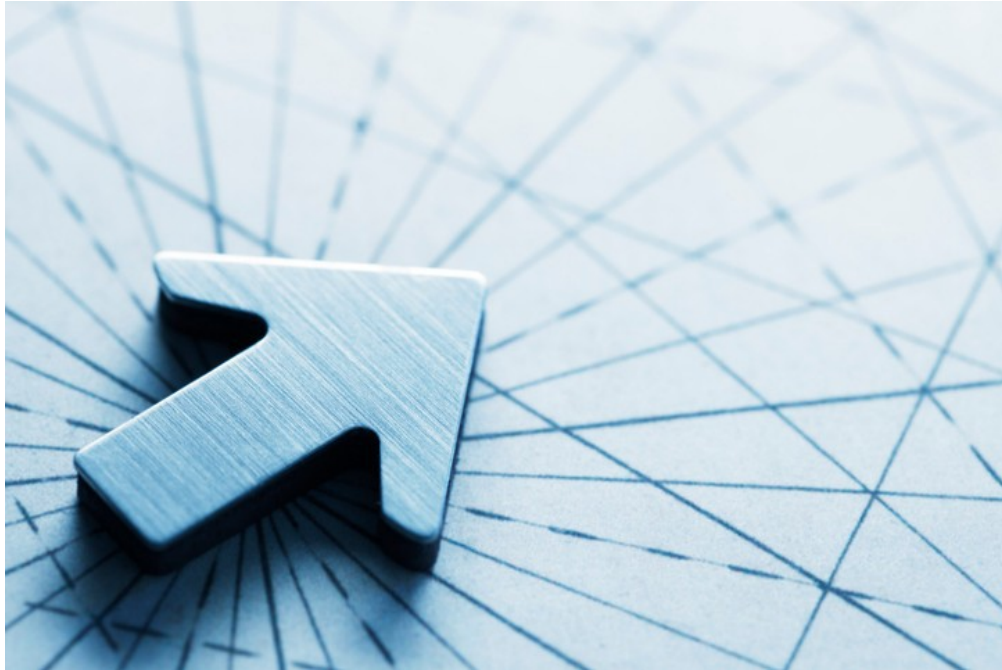
Seattle, WA 98121



TRIBAL RESOURCES

TRIBAL SUPPORT

<p>Nisqually Indian Tribe 4820 She-Nah-Num Drive S.E. Olympia, WA 98513 Phone: (360) 456-5221 Toll Free: (877) 768-8886 http://www.nisqually-nsn.gov</p>	<p>Chehalis Tribe 420 Howanut Rd P.O. Box 536 Oakville, WA 98568 Phone: (360) 709-1632 Information: (360) 273-5911 https://www.chehalis tribe.org/</p>
<p>Squaxin Island Tribe 10 SE Squaxin Lane Shelton, WA 98584 Phone: (360) 426-9781 Toll Free: (877) 386-3649 www.squaxin island.org</p>	<p>Skokomish Indian Tribe 80 N Tribal Center Rd Shelton, WA 98584 Phone: (360) 426-4232 Fax: (360) 877-5943 http://www.skokomish.org/</p>
<p>Skokomish Tribal Nation / Confederated Tribes of the Chehalis Reservation Chehalis serving Thurston, Lewis and Grays Harbor Counties Carol Cordova / Director, Vocational Rehabilitation North 80 Tribal Ctr. Rd Skokomish Nation, WA 98584 Phone: (360) 426-7788 Email: ccordova@skokomish.org</p>	<p>Skokomish serving Mason County Rosetta LaClair Phone: (360) 426-7788 E-mail: rlaclair@skokomish.org</p>
<p>South Puget Intertribal Planning Agency Whitney Jones, Project Director 3104 S.E. Old Olympic Highway Shelton, WA 98584 Phone: (360) 462-3230 Toll-free: 1 (800) 924-3984 FAX: (360) 432-8457 Email: wjones@spipa.org</p>	<p>Tribal Vocational Rehabilitation Programs Statewide Tribal Liaison List: https://www.dshs.wa.gov/sites/default/files/JJRA/dvr/documents/StatewideTribalLiaisonList-9262018.docx</p>



DIRECTORY OF RESOURCES

FEDERAL GOVERNMENT ASSISTANCE PROGRAMS

ADMINISTRATION ON AGING

The Administration on Aging is the Federal advocate agency for older persons and their concerns. AoA sponsors the ElderCare Locator, a free service that connects elders with services in the community.

☎ Toll-free: 800- 677-1116

💻 <https://acl.gov/about-acl/administration-aging>

MEDICARE

Medicare provides health insurance for people age 65 or older, under age 65 with certain disabilities, and any age with End-Stage Renal Disease.

☎ Toll-free: 800-633-4227 (MEDICARE)

☎ 877-486-2048 (TTY)

💻 www.medicare.gov

SOCIAL SECURITY ADMINISTRATION

Contact Social Security to apply for retirement or disability benefits. The Olympia office is located at 402 Yauger Way SW.

☎ Toll Free: 800-772-1213

☎ 800-325-0778 (TTY)

💻 www.ssa.gov

VETERANS ADMINISTRATION

If you are a veteran or have served in the U.S. military, call the U.S. Department of Veterans Affairs (VA) for information about veterans' benefits and services available in your area.

☎ Toll-free: 800-827-1000

☎ Veteran's Crisis Line: 800-273-8255

💻 www.va.gov

STATE AND LOCAL GOVERNMENT ASSISTANCE PROGRAMS

ADULT PROTECTIVE SERVICES

Adult Protective Services (APS) investigates complaints of abuse against vulnerable adults living in their own home or somewhere other than a residential care facility. Calls can be made anonymously.

☎ Toll-free: 877-734-6277

Toll-free: 800-977-5456 (TTY)

www.dshs.wa.gov/report-abuse-and-neglect

If you suspect the abuse, neglect or exploitation of a child or vulnerable adult, call:

1-866-ENDHARM (1-866-363-4276)

and your call will be routed to the appropriate agency.

AGING & LONG-TERM SUPPORT

Aging & Long-Term Support

Administration (AL TSA) is part of the state Department of Social and Health Services (DSHS). It serves adults with chronic illnesses or conditions, etc.

☎ 360-725-2300

<http://www.dshs.wa.gov/altsa>

AREA AGENCY ON AGING

Senior Information & Assistance, case management services for seniors and adults with disabilities.

Thurston County

2404 Heritage Ct SW,
Ste A
Olympia, WA 98502
360-664-2168

Mason County

628 W Alder St
PO Box 2087
Shelton, WA 98584
360-427-2225

☎ Toll-free: 888-545-0910 or 877-227-4696
(Thurston/Lewis/Mason)

CHILDREN'S ADMINISTRATION (DCYF-Department of Children, Youth and Family)

Services to support families who are in crisis and at risk of disruption; and services to care for children in placement.

☎ Reception and Intake:

Toll-free: 888-713-6115

☎ After Hours, Toll-free: 800-562-5624

💻 www.dcyf.wa.gov/

COMMUNITY SERVICES OFFICE (DSHS)

Many DSHS services, such as financial assistance, child care assistance, food assistance (EBT/Quest Card), etc.

☎ Toll-free: 877-501-2233

💻 www.dshs.wa.gov/esa/community-services-offices/how-apply-services

DEAF AND HARD OF HEARING

The Office of the Deaf and Hard of Hearing (ODHH) provides services to the deaf, hard of hearing and deaf-blind communities.

☎ 800-422-7930 (Voice/TTY)

☎ 360-725-3450 (Voice)

☎ 360-725-3455 (TTY)

💻 <https://dshs.wa.gov/altsa/office-deaf-and-hard-hearing>

DEVELOPMENTAL DISABILITIES ADMINISTRATION (DDA)

A state agency within DSHS, DDA administers home and community-based programs (and some facility-based services) for eligible children and adults with developmental disabilities.

☎ 360-725-4250 (Thurston County)

☎ 360-432-2151 (Mason County)

☎ Toll-free: 800-707-1202

DEVELOPMENTAL DISABILITIES— THURSTON/MASON COUNTIES

The Developmental Disabilities Program contracts with agencies in Thurston and Mason Counties to provide employment and Community Inclusion (Access) to adults.

☎ 360-867-2518

💻 www.co.thurston.wa.us/health/ssdd/index.html

DIVISION OF VOCATIONAL REHABILITATION

The Division of Vocational Rehabilitation is a statewide resource that helps people with disabilities obtain and retain employment. It provides information and referral services for independent living and individual counseling. To be connected to your local DVR office, call:

☎ 360-664-3060 (Thurston County) or 711

☎ 360-432-2100 (Mason County) or 711

💻 www.dshs.wa.gov/office-of-the-secretary/division-vocational-rehabilitation

HOME CARE REFERRAL REGISTRY

The Home Care Quality Authority operates the Home Care Referral Registry, a web-based tool that is used to match needs of Washington State residents who receive publicly funded in-home care services, with screened and pre-qualified home care workers.

☎ 360-664-3162 x 143

💻 www.hcrr.wa.gov

HOME AND COMMUNITY SERVICES

Home and Community Services is an agency within Aging & Long-Term Support Administration that helps adults who may need help paying for long term care due to a medical condition or disability. Also provides assistance in applying for Medicaid.

☎ Toll-free: 800-462-4957

☎ 360-664-8454 (Mason and Thurston County)

💻 www.dshs.wa.gov/altsa/residential-care-services/residential-care-services

LONG TERM CARE OMBUDSMAN

A Long-Term Care Ombudsman responds to complaints about Adult Family Homes, Assisted Living Facilities and Nursing Homes.

☎ 800-562-6028 (Voice)

☎ 800-737-7931 (TTY)

💻 www.waombudsman.org/

MEDICAL ASSISTANCE/MEDICAID

Medicaid is a state and federal government health insurance program available to people with very limited income and resources. Apply through the Washington Health Plan Finder.

☎ 855-923-4633 (Voice)

☎ 855-627-9604 (TTY)

💻 To apply online:

www.wahealthplanfinder.org

**MENTAL HEALTH—
THURSTON AND MASON COUNTIES**

If you receive Medicaid and have questions about obtaining mental health and substance use disorder (behavioral health) services for Thurston and Mason Counties, you may contact the Thurston-Mason Behavioral Health Organization:

☎ 360-763-5828 or 800-658-4105

💻 <http://tmbho.org/>

SERVICES FOR THE BLIND

The Washington State Department of Services for the Blind (DSB) is a state rehabilitation agency that offers assistance to persons who are blind or visually impaired.

☎ 360-725-3846 or 360-725-3830

☎ Toll-free: 800-552-7103

💻 www.dsb.wa.gov

**STATEWIDE HEALTH
INSURANCE BENEFITS ADVISORS
(SHIBA)**

Part of the Washington State Insurance Commissioner's Consumer Protection Services, SHIBA (State Health Insurance Benefits Advisors) HelpLine provides free, unbiased and confidential assistance with Medicare and health care choices.

☎ 360-725-700

☎ 360-725-7100

☎ 800-562-6900

💻 www.insurance.wa.gov

COMMUNITY RESOURCES BY TOPIC

ABUSE NEGLECT

DOMESTIC VIOLENCE HOTLINE

☎ 360-754-6300 (Thurston County)
☎ 360-432-1212 (Mason County)
☎ Toll-free: 800-799-7233(National)
☎ TTY: 800-787-3224 (National TTY)

ENDHARM HOTLINE

Report the abuse, neglect or exploitation of a child or vulnerable adult.
☎ Toll-free: 866-ENDHARM (363-4276)

ADVOCACY/SUPPORT

AIDS/HIV ADVOCACY & SUPPORT HOTLINE

☎ 800-272-2437

THE ARC OF WASHINGTON STATE

Provides information & referral, systems advocacy for people with developmental disabilities.

☎ 360-357-5596

AUTISM SOCIETY OF WASHINGTON

☎ Toll-free: 888-279-4968

BRAIN INJURY ALLIANCE OF WASHINGTON

Support to survivors of brain injury and their families, education to those who are being affected by brain injury, and advocacy.

☎ Toll-free: 877-824-1766

CAPITAL RECOVERY CENTER (formerly Capital Clubhouse)

Support groups, peer counseling, advocacy and education on mental health issues.

☎ 360-357-2582

CENTER FOR INDEPENDENCE

Peer support and mentoring, information and referral, independent living skills training, etc.

☎ Toll-free: 800-724-8172 (Lakewood)

DISABILITY RIGHTS WASHINGTON

Provides free information, referral and advocacy services to people with disabilities.

☎ Toll-free: 800-562-2702

☎ Toll-free: 711 TTY

INFORMING FAMILIES, BUILDING TRUST

Provides resources and information geared towards people with developmental disabilities of all ages, and their families.

www.informingfamilies.org

NW JUSTICE PROJECT

Coordinated Legal Education, Advice and Referral system (CLEAR)

CLEAR is Northwest Justice Project's toll-free telephone service for eligible low-income people to obtain free legal assistance with civil legal problems.

☎ Toll-free: 888-201-1014

PAVE (Partnerships for Action Voices for Empowerment)

Workshops, transition, information sharing, parent support groups, free publications.

☎ 253-565-2266

☎ Toll-free: 800-5 PARENT (V/TDD)

PEOPLE FIRST OF THURSTON COUNTY

The mission of People First is “to assist people with a disability to realize and appreciate that we are PEOPLE FIRST and our disabilities are secondary and that we are equal citizens in our communities.”

☎ 360-742-6562

PREVENTION, ADVOCACY, AND SPECIALIZED SERVICES

Drug abuse prevention and sexual assault advocacy ☎ 360-427-1686 (Shelton)

TACOMA AREA COALITION OF INDIVIDUALS WITH DISABILITIES (TACID)

The mission of TACID is to support the independence of individuals with disabilities through peer support, advocacy, and self-sufficiency programs.

☎ 253-565-9000 (Voice)

CHILDREN & FAMILIES

CHILD CARE ACTION COUNCIL

CCAC is a non-profit organization supporting child care providers, parents and children in our community by promoting and nurturing early learning communities.

☎ 360-786-8907

☎ 800-466-1114 (referral line)

CHILD CARE RESOURCE AND REFERRAL

Child Care Resource and Referral offers free child care searches for parents of *all* children, with and without a disability, in Thurston, Mason, Lewis, Grays Harbor and Pacific Counties. A database of licensed child care centers and family child care homes is constantly updated to assist parents in finding a “best fit” match.

☎ 360-754-0810

FAMILY SUPPORT CENTER

Provides a wide variety of supports for families with children.

☎ 360-754-9297

HEAD START/ECEAP

Prepares 4-year-olds with disabilities or low income families for entry skills for kindergarten. For more information:

💻 <https://www.dcyf.wa.gov/services/earlylearning-childcare/eceap-headstart>

💻 <https://www.wsaheadstarteceap.com/>

💻 <https://eclkc.ohs.acf.hhs.gov/programs/washington-head-start-collaboration-office>

SOUTH SOUND PARENT TO PARENT

One-to-one matches of parents, workshops and seminars, social and recreational events, resource library, home equipment loan programs, information and referral, monthly newsletter; local lead agency for birth to 3 services in Thurston County and South Mason County.

☎ Thurston County: 360-352-1126

☎ Mason County: 360-432-7788

COMMUNITY SERVICES

OTHER BANK - YWCA Distributes hygiene supplies to low income families.

☎ 360-352-0593

YELM COMMUNITY SERVICES

Food bank, clothing bank, youth activities, Head Start, employment search assistance, emergency homeless shelter, rent and utility assistance, housing for people with developmental disabilities.

☎ 360-458-7000

COMMUNITY YOUTH SERVICES

Agency which provides a wide array of services to youth including individuals in foster care, homeless youth, and youth needing assistance achieving educational and employment goals.

☎ 360-943-0780

COMMUNITY SERVICE LISTS

An online list of services and supports in our area available through the Crisis Clinic web site:

Thurston County: <http://crisis-clinic.org/pdf/CommunityServicesListThurston.pdf>

Mason County: <http://crisis-clinic.org/pdf/CommunityServicesListMason.pdf>

Washington 211: Call for health and human service information, referrals and other assistance.

<https://win211.org/>

CRISIS

CRISIS CLINIC OF THURSTON/MASON

☎ 360-586-2800 Crisis Line

☎ 360-586-2777 Youth Help Line

VETERAN'S CRISIS SERVICES

☎ 800-273-8255, EXT 1 ☎ 888-457-4838

☎ Text "MIL1" to 839863

DURABLE MEDICAL EQUIPMENT

EASTER SEALS WASHINGTON

Provides referrals to Durable Medical Equipment Loan Programs

☎ Toll-free: 206-281-5700

MEDICAL EQUIPMENT AND SUPPLIES BANK

Medical equipment for loan at no charge, in Lacey and Yelm. Also accepts donations of medical equipment and supplies.

☎ 360-456-8810 (message line)

SOUTH SOUND PARENT TO PARENT

Used medical equipment available for loan at no cost, as long as needed.

☎ 360-352-1126 (Thurston County)

EDUCATION

TOGETHER!

Educational and advocacy support for students and their families. After school programs available in many local schools.

☎ 360-493-2230

FAMILY EDUCATION AND SUPPORT SERVICES

Provides training, parent/child support programs. <http://familyess.org/>

EMERGENCY SHELTERS

EMERGENCY SHELTER/ COLD WEATHER/OVERNIGHT HOUSING

HOUSING HOTLINE (Thurston)

☎ 360-628-7343

MASON COUNTY SHELTER

☎ 360-427-6919

SAFEPLACE: .WOMEN'S SHELTER

☎ 360-786-8754

SALVATION ARMY

☎ 360-705-2850

TURNING POINTE DOMESTIC VIOLENCE 24-HOUR HOTLINE (SHELTON)

☎ 360-426-1216

FOOD BANKS

THURSTON COUNTY FOOD BANK

☎ 360-352-8597 (Olympia)

NORTH MASON FOOD BANK

☎ 360-725-4615 (Belfair)

SAINTS' PANTRY FOOD BANK

☎ 360-427-8847 (Shelton)

ROCHESTER (ROOF) FOOD BANK

☎ 360-273-6375

YELM COMMUNITY SERVICES

☎ 360-458-7000

HOUSING

COMMUNITY ACTION COUNCIL OF LEWS/MASON/THURSTON COUNTIES

Information and referral, utility assistance, home repairs/modifications and weatherization

☎ 360-426-9726 (Mason County)

☎ 360-438-1100 (Thurston County)

HOMES FIRST

Low income housing.

☎ 360-236-0920

HOUSING AUTHORITY

☎ 360-753-8292 (Thurston County)

☎ 360-426-9726 (Mason County)

☎ 360-426-4641 (Shelton)

SIDEWALK

A direct service agency working to end homelessness in our community.

☎ 360-515-5587

THURSTON COUNTY VETERAN'S ASSISTANCE/LACEY VETERAN'S HUB

Helps eligible veterans or family members with housing services including rent and mortgage

☎ 360-456-3850

MEDICAL/DENTAL

CAPITAL RECOVERY CENTER

Opportunity for friendship, support, and advocacy on mental health issues.

☎ 360-357-2582

CHOICE REGIONAL HEALTH NETWORK

Access to Baby and Child Dentistry Program (ABCD): Connects children under age 6 who have a DSHS medical services card with local dental providers.

☎ 360-539-7576

HEARING, SPEECH AND DEAFNESS CENTER

Speech and audiology services, preschool and early learning, assistive technology.

☎ Toll-free: 866-421-5560 (Voice)

MASON COMMUNITY DENTAL

Dental services for low income residents of Mason County children and adults.

☎ 360-426-2708

MASON COUNTY HEALTH DEPARTMENT

Access to Baby / Child Dentistry (ABCD)

Connects children under age 6 who have a DSHS medical services card with local dental providers.

☎ 360-427-9670 ext. 410

COMMUNITY HEALTH SERVICES

WIC, maternal child health services, special health care needs, maternity support, nutrition education, etc.

☎ 360-427-9670, ext. 400

MEDICAID

Medicaid is a state and federal government health insurance program available to people with very limited income and resources.

☎ Toll-free: 800-562-3022

☎ TTY/TDD: 800-848-5429

MEDICARE

☎ 800-633-4227

PLANNED PARENTHOOD

☎ 360-426-2933 (Shelton)

☎ 360-754-5522 (Olympia)

PROVIDENCE ST. PETER FAMILY MEDICINE

Accepts DSHS medical services card.

☎ 360-493-7230

PROVIDENCE WEST OLYMPIA IMMEDIATE CARE CLINIC

Walk-in medical clinic, evenings and weekends.

☎ 360-486-6710

SEA-MAR CLINIC

Low income medical and dental care with locations throughout Thurston County.

☎ Medical: 360-491-1399

☎ Dental: 360- 570-8016

Thurston walk-in medical clinic.

☎ 360-742-5000

SOUTH PUGET SOUND COMMUNITY COLLEGE DENTAL CLINIC

Provides dental services with the exception of involved surgery, emergency care, dentures and orthodontic treatment.

Accepts DSHS medical services cards for emergency, other fees vary according to services.

☎ 360-596-5464

STATEWIDE HEALTH INSURANCE BENEFITS ADVISORS (SHIBA)

Provides free, unbiased and confidential assistance with Medicare and health care choices.

☎ 360- 586-6181

URGENT CARE SOUTH, LLC

Walk-in medical clinic, open evenings and weekends.

☎ 360-943-3633

US HEALTHWORKS

Same day medical care.

☎ 360-455-1350

MEDICAL/DENTAL, continued

WESTCARE CLINIC

Walk-in medical clinic.

☎ 360-357-9392

TALL ELKS THERAPY PROGRAM

Home-based occupational or physical therapy for children with developmental delays or physical disabilities

☎ 800-825-3557

RECREATION

THURSTON COUNTY SPECIALIZED RECREATION

☎ 360-867-2588

BOY SCOUTS

☎ 360-357-3331

GIRL SCOUTS

☎ Toll-free: 800-541-9852

EASTER SEALS WASHINGTON

Summer and year-round recreation for adults and children with disabilities.

☎ Toll-free: 800-678-5708

THE EVERGREEN STATE COLLEGE

College Recreation Center (CRC). Gym, pool, and weight room. Wheelchair accessible pool.

☎ 360-867-6770

HEARTSPARKLE PLAYERS

Playback Theatre Company that offers interactive theatre techniques as tools for community building, education, and social change.

☎ 360-943-6772

<https://www.heartsparkle.org/>

LACEY PARKS AND RECREATION

Low cost programs for people of all ages.

☎ 360-491-0857

OLYMPIA PARKS, ARTS AND REC

Low cost programs for people of all ages.

☎ 360-753-8380

TUMWATER PARKS &

RECREATION Low cost programs for people of all ages.

☎ 360-754-4160

SPECIAL OLYMPICS

☎ 360-426-4471 (Mason)

☎ 360-867-9282 (Thurston)

YMCA

Plum Street (Olympia)

☎ 360-357-6609

Briggs Community Branch (Olympia)

☎ 360-753-6576

TELEPHONE SERVICE

PHONE SERVICE

WASHINGTON RELAY

Speech-to-Speech (STS) service uses specially-trained relay operators who are familiar with many different types of speech patterns; operators repeat the user's side of the conversation to ensure that the entire conversation is understood. STS is available 24 hours/day, 365 days/ year. (800) 974-1548

www.WashingtonRelay.com

FEDERAL LIFELINE PROGRAM

Federal Program for telephone assistance

<https://www.fcc.gov/consumers/guides/lifeline-support-affordable-communications> or www.fcc.gov/lifeline

WIRELESS PHONE ASSISTANCE

Several wireless programs offer discounted cell phone service to low income households in Washington State (as of this printing, Access Wireless, Assurance Wireless, Budget Mobile, enTouch Wireless, Life Wireless, Q Link Wireless, Safelink Wireless, Total Call Mobile, and Yourtel Wireless).

For information about these programs:

www.freegovernmentcellphones.net

TRANSPORATION

INTERCITY TRANSIT (IT)

Individuals with disabilities who qualify through the ADA can request an application to receive a monthly pass at a reduced rate.

☎ 360-786-1881

INTERCITY TRANSIT DIAL-A-LIFT

☎ Ride Scheduling: 360-754-9393

☎ Certification: 360-705-5896

MASON TRANSIT AUTHORITY

All vehicles are accessible. No cost for service within Mason County.

☎ 360-427-5033

☎ 360-427-0268 (TTY)

PARATRANSIT (contracted by State)

Service for non-emergency medical appointments for Medicaid recipients.

☎ Toll-free: 800-846-5438

RURAL TRANSPORTATION (R/T)

Accessible public transportation for the Nisqually Indian Tribe, the Confederated Tribes of the Chehalis Reservation, the communities of Bucoda, Rainier Rochester, Tenino, Yelm and other parts of rural Thurston County.

☎ Toll-free: 800-650-RTGO (7846)

INTERCITY TRANSIT BUS TRAVEL TRAINING PROGRAM

☎ 360-705-5879

☎ 360-357-7133 (TTY)

TRAVEL

GET UP AND GO ASSISTED TRAVEL

Travel opportunities for people with disabilities.

☎ 503-422-5523 (Oregon)

SUNDIAL

Arranges vacations for people with disabilities.

☎ 503-738-3324 (Oregon)

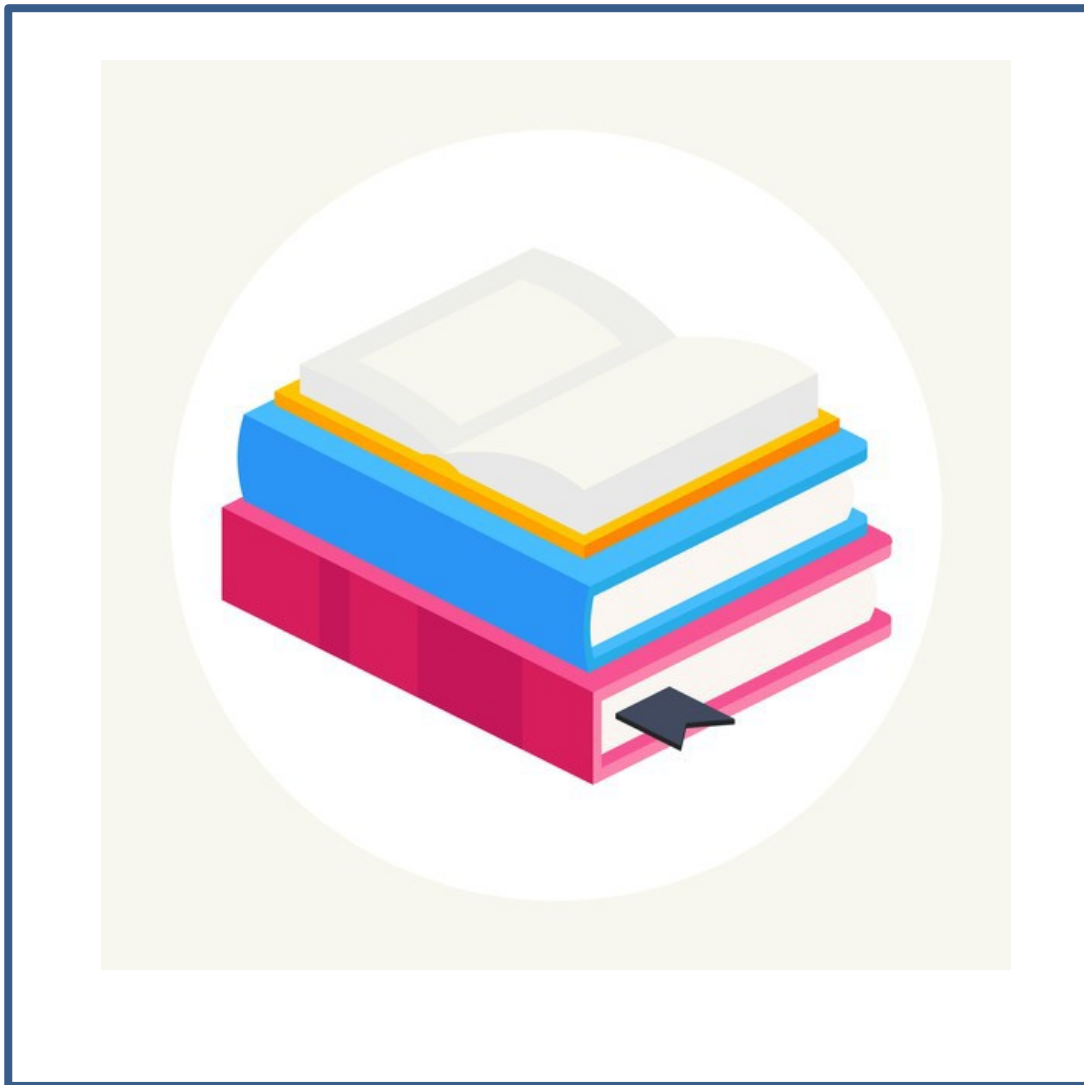
☎ Toll-free: 800-547-9198

TRIPS, INC

Travel for adults of various abilities in a safe, respectful and fun atmosphere.

☎ 541-686-1013 (Oregon)

☎ Toll-free: 800-686-1013



GLOSSARY: TERMS AND ACRONYMS

GLOSSARY OF TERMS AND ACRONYMS

AASA	Aging and Adult Services
ACLD	Associations for Children with Learning Disabilities
AAA	Area Agency on Aging
ACLU	American Civil Liberties Union
ADA	Americans with Disabilities Act
ADD	Attention Deficit Disorder
ADHD	Attention Deficit Hyperactive Disorder
AFH	Adult Family Home
AL	Alternative Living
APS	Adult Protective Services
ASL	American Sign Language (see also SEE)
ASW	Autism Society of Washington
CA	Community Access or Children's Administration
CAP	Client Assistance Program
CEC	Council for Exceptional Children
CFR	Code of Federal Regulations
CHDD	Center on Human Development & Disability
CP	Cerebral Palsy
CPS	Child Protective Services
CSHCN	Children with Special Health Care Needs
CSO	Community Service Office
DD	Developmental Disability
DDA	Developmental Disabilities Administration
DDC	Developmental Disabilities Council
DOH	Department of Health
DSHS	Department of Social and Health Services
DRW	Disability Rights Washington
DVR	Division of Vocational Rehabilitation
EAW	Epilepsy Association of Washington
ESD	Educational Service District

FHA	Federal Housing Administration
GED	General Equivalency Diploma
HRC	Human Rights Commission
HUD	Housing and Urban Development
IDEA	Individuals with Disabilities Education Act
IE	Individual Supported Employment
IEP	Individual Education Plan
IISP	Individual Instruction and Support Plan
ISP	Individual Support Plan
IP	Individual Provider
ISE	Individual Supported Employment
IT	Intercity Transit
ITP	Individual Transition Plan
IQ	Intelligence Quotient
OCD	Obsessive Compulsive Disorder
OCR	Office of Civil Rights
OJT	On-the-Job Training
OSPI	Office of the Superintendent of Public Instruction
PASS	Plans for Achieving Self-Support (Social Security Program)
PAVE	Partnerships for Action Voices for Empowerment
RCW	Revised Code of Washington
RHC	Residential Habilitation Center
SEE	Signing Exact English
SL	Supported Living
SPSCC	South Puget Sound Community College
SSA	Social Security Administration
SSDI	Social Security Disability Income
SSI	Supplemental Security Income
SSPC	South Sound Parent Coalition
TACID	Tacoma Area Coalition of Individuals with Disabilities
TANF	Training and Assistance for Needy Families (Formerly AFDC)
TDD	Telecommunication Devices for the Deaf

TTY	Text Telephone
UCP	United Cerebral Palsy
VA	Veteran's Administration
WAC	Washington Administrative Code
WIOA	Workforce Innovation and Opportunity Act